

DRAWING INDEX	
SHEET NO.	DRAWING TITLE
K001	COVER SHEET
C001	GREENWOOD 1+000 to 1+260
C002	GREENWOOD 1+260 to 1+500
C003	GREENWOOD 1+500 to 1+700
C004	DARTMOUTH
D001	STANDARD DETAILS

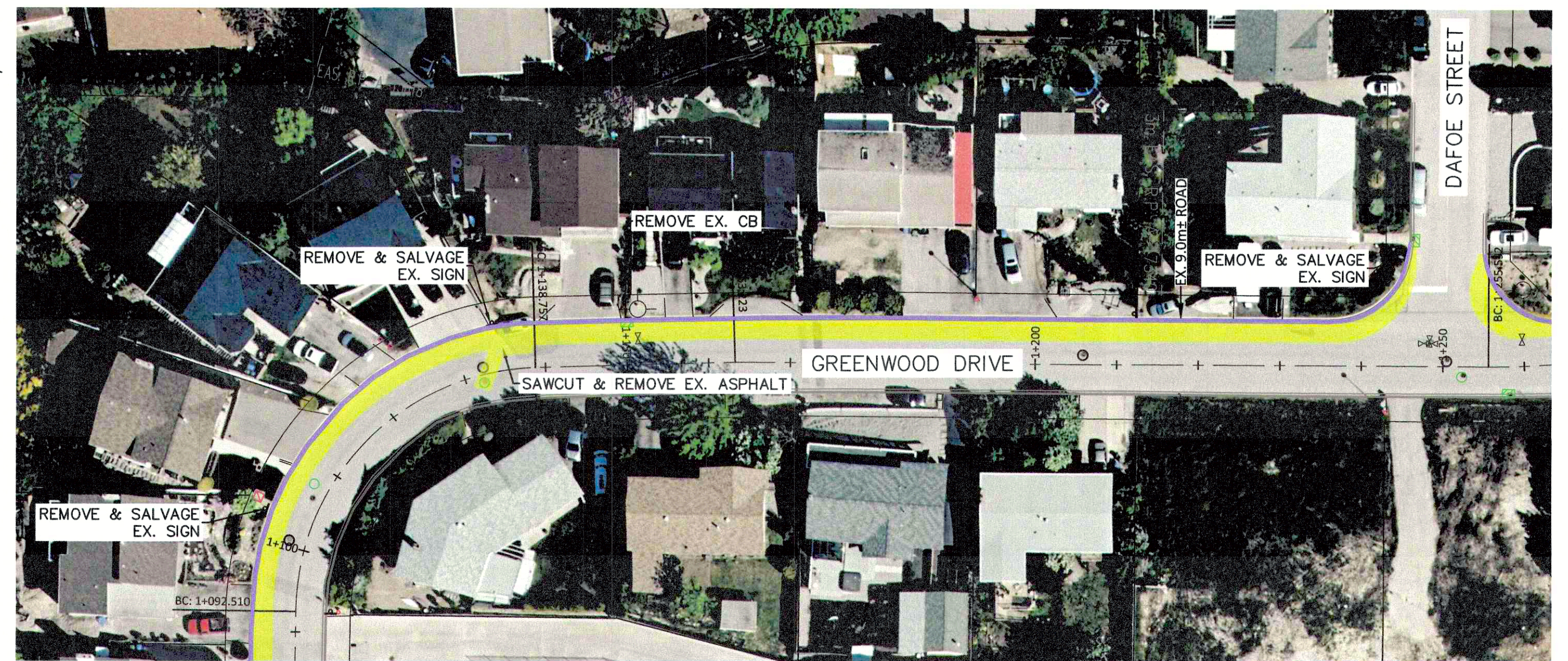
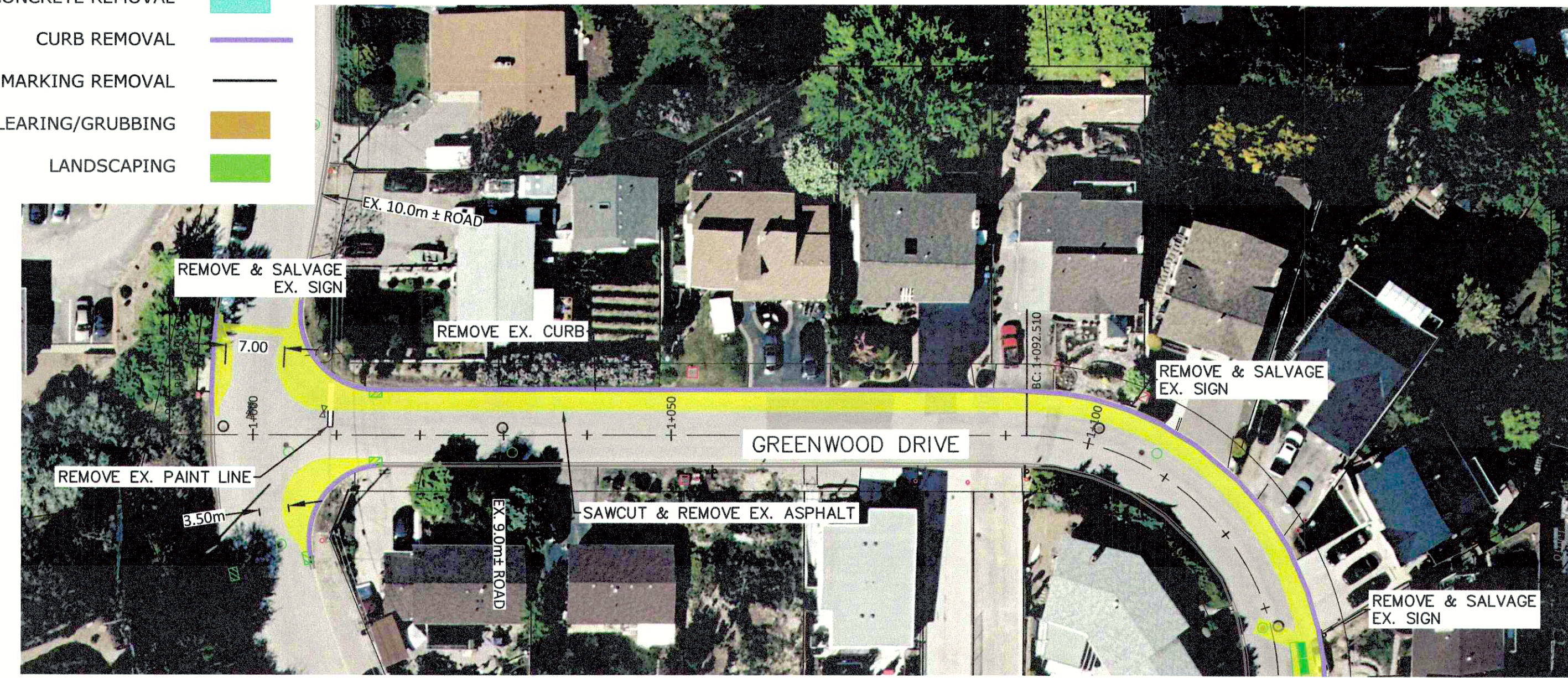
GREENWOOD DRIVE SIDEWALK



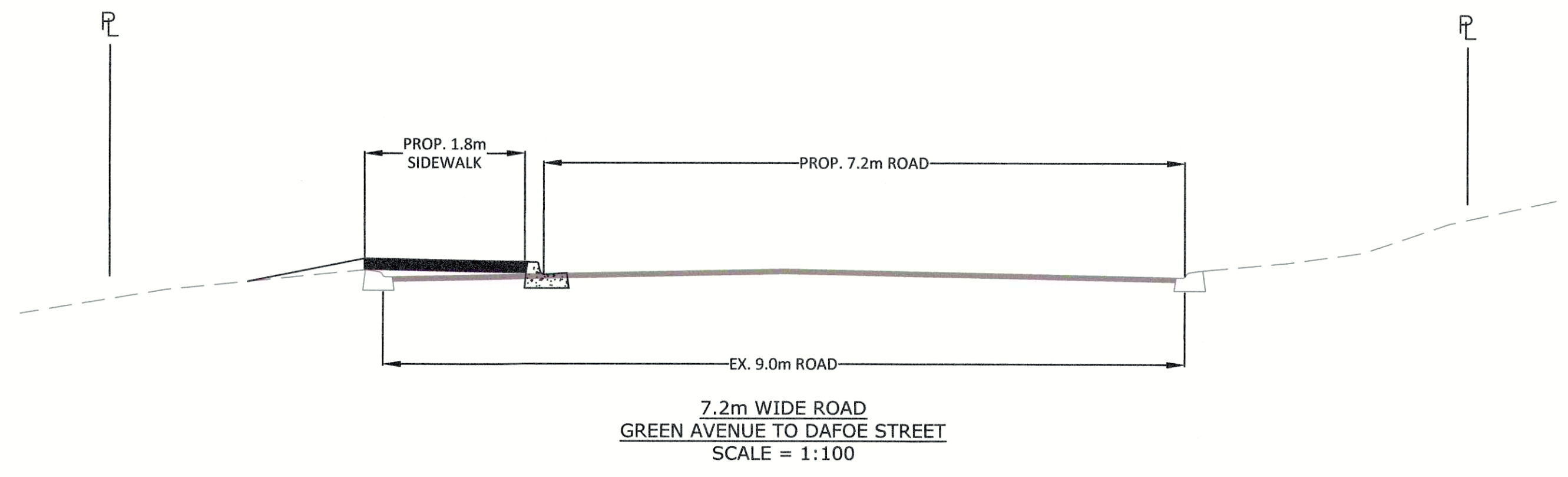
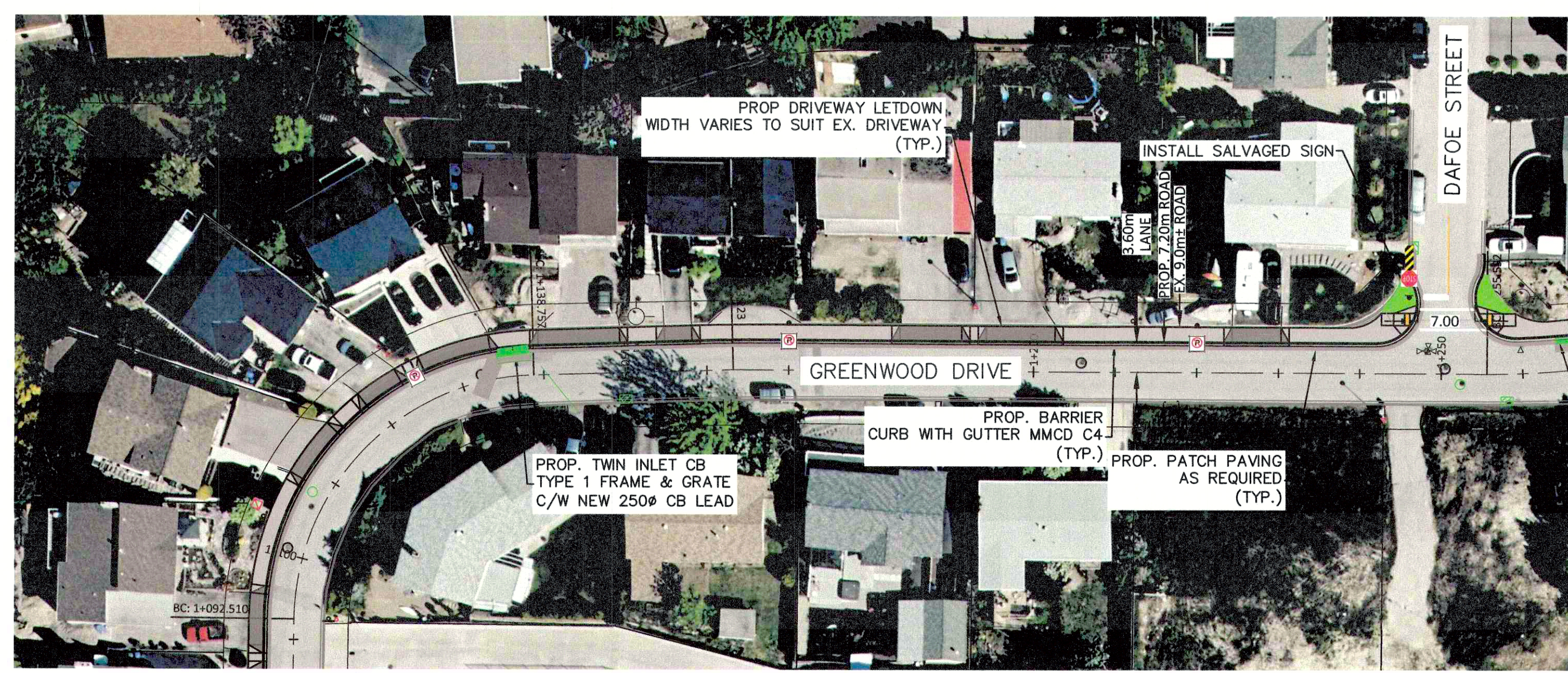
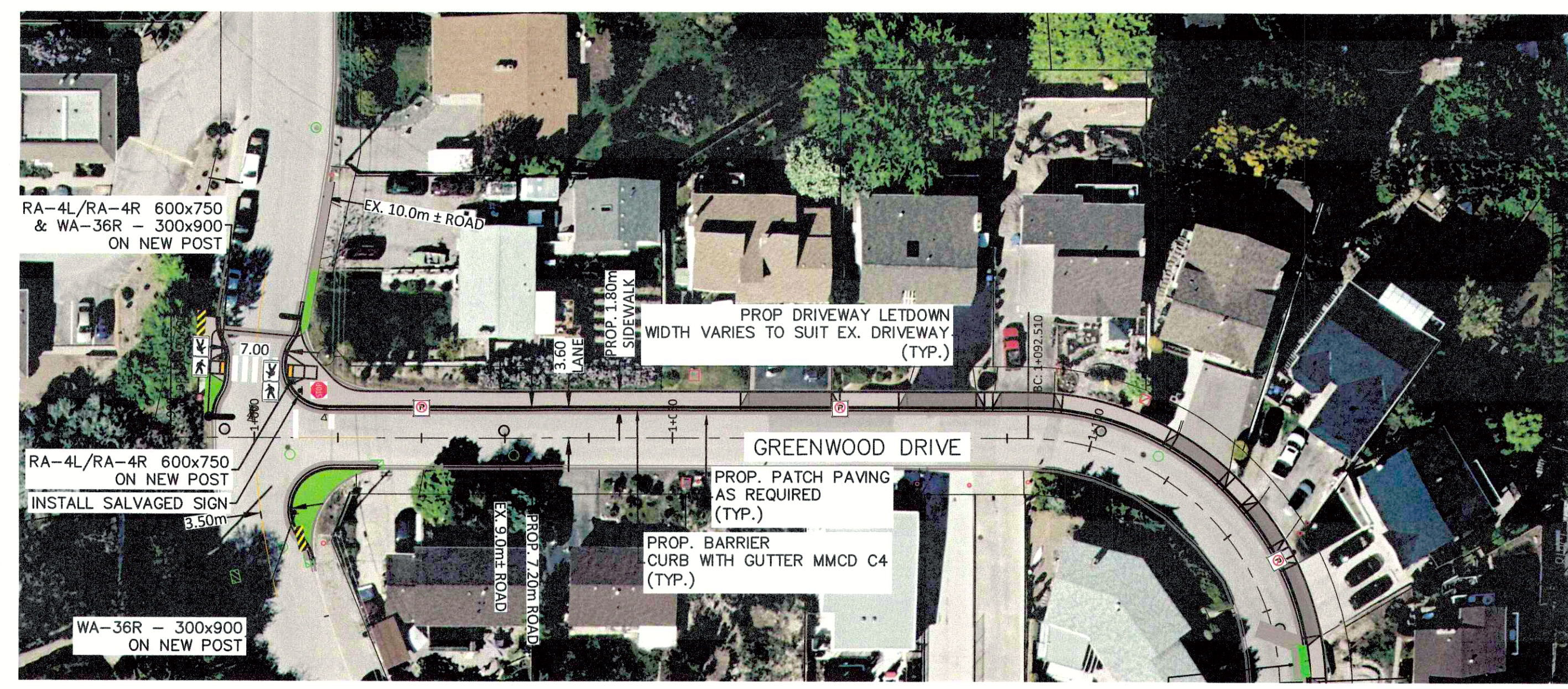
Engineering

- ASPHALT REMOVAL
- CONCRETE REMOVAL
- CURB REMOVAL
- LINE MARKING REMOVAL
- CLEARING/GRUBBING
- LANDSCAPING

REMOVALS PLAN



INSTALLATION PLAN



22-013_DESIGN.dwg

PERMIT TO PRACTICE
CITY OF PENTICTON
PERMIT NUMBER: 1003632
Engineers & Geoscientists of British Columbia

Existing	
Gas main	—
Electrical cable/telephone	—
Sanitary sewer	—
Storm sewer	—
Domestic watermain	—
Raw watermain	—
Property line	—
Curb & gutter	—
Edge of asphalt	—
Inspection chamber	○
Sanitary manhole	○
Storm manhole	○
Double catch basin	○
Side inlet catch basin	○
Top inlet catch basin	○
Catch basin manhole	○
Storm oil interceptor	○
Water valve	○
Water curb stop	○
Water hydrant	○
Water air valve	○
Street light	○
Power pole	○
Electrical service box	○
Electrical vault	○
Electrical transformer	○

Proposed	
Gas main	—
Electrical cable/telephone	—
Sanitary sewer	—
Storm sewer	—
Domestic watermain	—
Raw watermain	—
Property line	—
Curb & gutter	—
Edge of asphalt	—
Sanitary service	—
Water service	—
Inspection chamber	○
Sanitary manhole	○
Storm manhole	○
Double catch basin	○
Side inlet catch basin	○
Top inlet catch basin	○
Catch basin manhole	○
Storm oil interceptor	○
Water valve	○
Water curb stop	○
Water hydrant	○
Water air valve	○
Street light	○
Power pole	○
Electrical service box	○
Electrical vault	○
Electrical transformer	○

No.	Date	By	Revisions	CKD
03	2023/04/06	CA	ISSUED FOR CONSTRUCTION	CS
02	2023/02/10	TJR	ISSUED FOR ADDENDUM #3	CS
01	2022/11/15	TJR	ISSUED FOR TENDER	CS
	yyy/mm/dd			



Scale horiz. 1:500
Scale vert. 1:100
Sheet 01 of 05
Drawn by TJR
Approved by JC
Plot date 2023/04/06

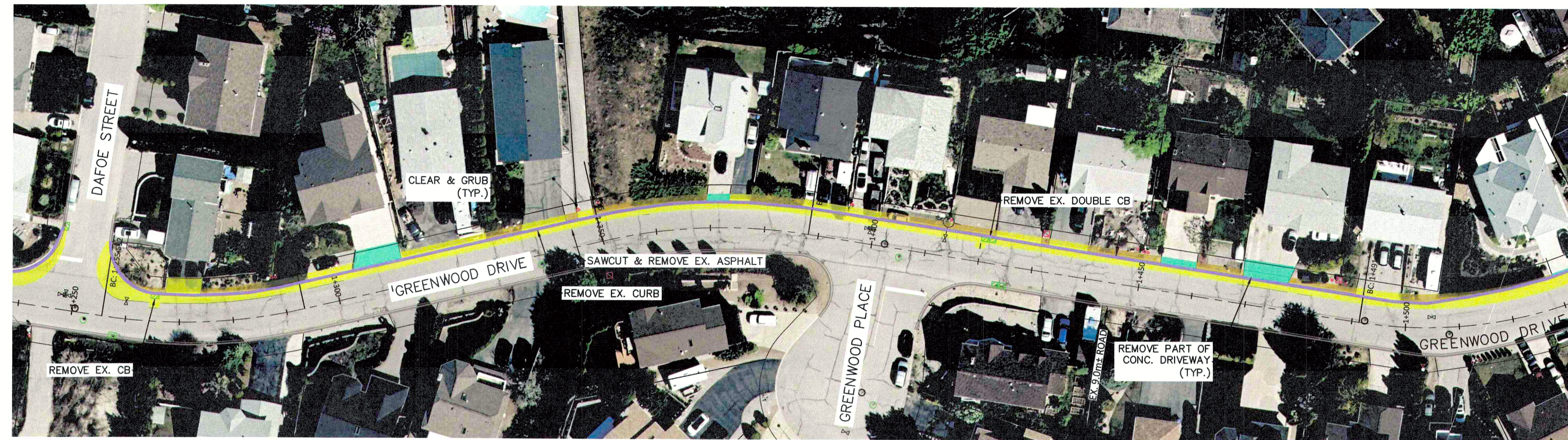
Project
GREENWOOD DRIVE SIDEWALK
Title
GREENWOOD DRIVE - 1+000 TO 1+260

Drawing No.
C001
Revision No.
02

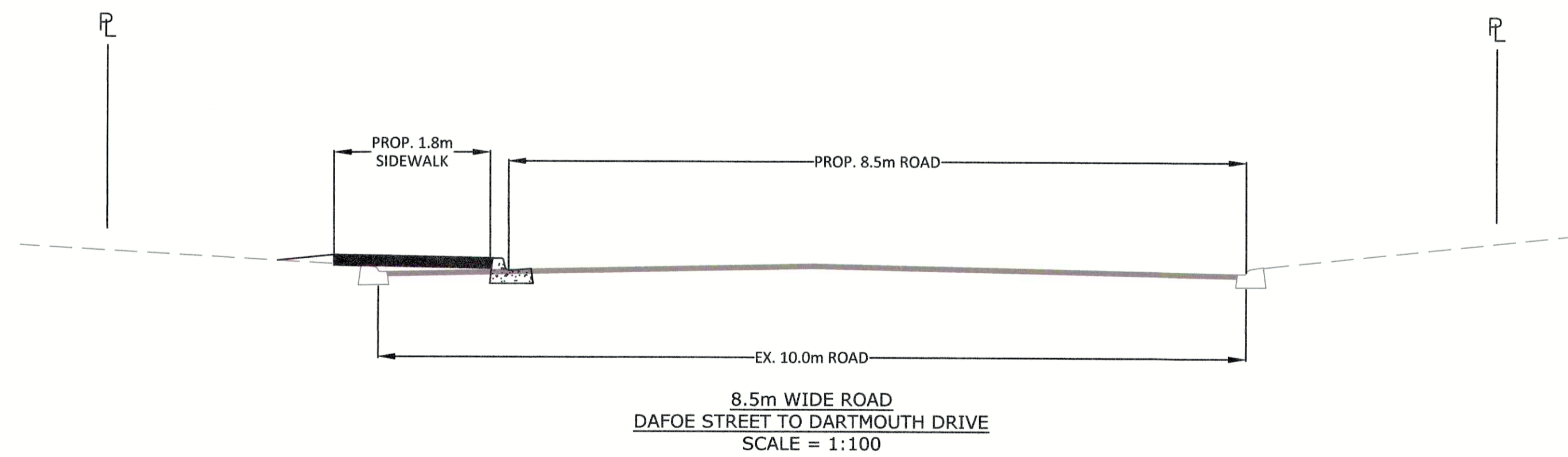
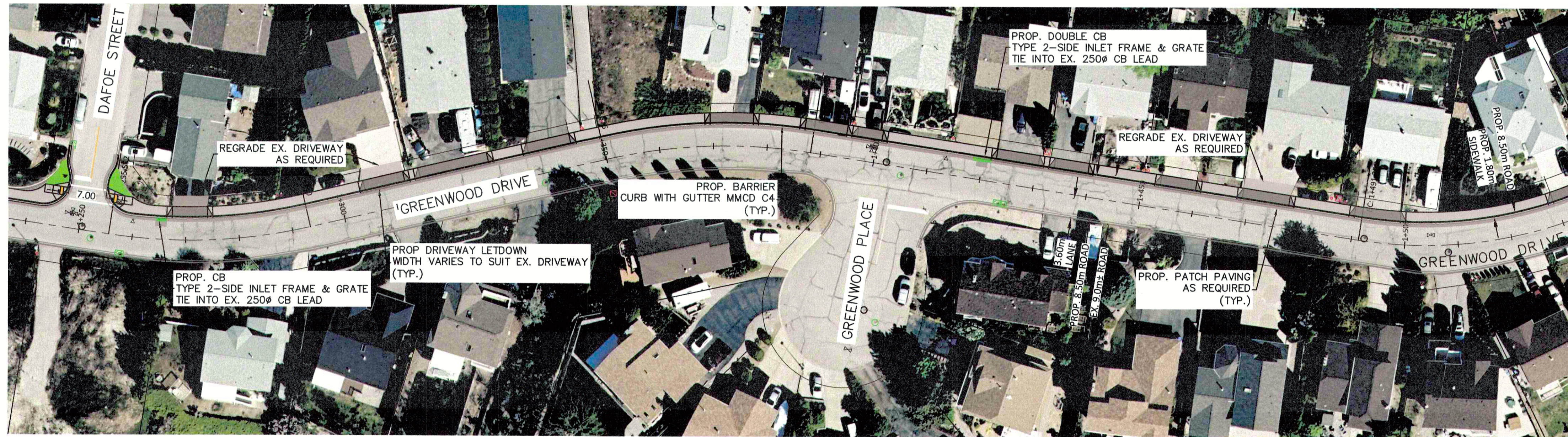
- ASPHALT REMOVAL
- CONCRETE REMOVAL
- CURB REMOVAL
- LINE MARKING REMOVAL
- CLEARING/GRUBBING
- LANDSCAPING



REMOVALS PLAN



INSTALLATION PLAN

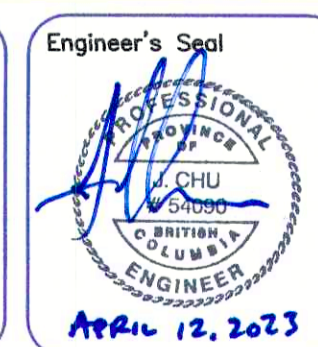


22-013 DESIGN.dwg

PERMIT TO PRACTICE
CITY OF PENTICTON
PERMIT NUMBER: 1003632
Engineers & Geoscientists of British Columbia

Existing		Proposed	
Gas main	—	Sanitary service	—
Electrical cable/telephone	—	Water service	—
Sanitary sewer	—	Sanitary manhole	○
Storm sewer	—	Water hydrant	○
Domestic watermain	—	Storm manhole	○
Raw watermain	—	Water air valve	○
Property line	—	Street light	○
Edge of asphalt	—	Power pole	○
Inspection chamber	○	Water valve	⊕
Sanitary manhole	○	Water curb stop	⊕
Storm manhole	○	Water hydrant	⊕
Double catch basin	□	Water air valve	⊕
Side inlet catch basin	□	Street light	⊕
Top inlet catch basin	□	Power pole	⊕
Catch basin manhole	○	Electrical service box	⊕
Storm oil interceptor	□	Electrical vault	⊕
Water valve	⊕	Electrical transformer	⊕
Water curb stop	⊕	Edge of asphalt	—
Water hydrant	⊕		
Water air valve	⊕		
Street light	⊕		
Power pole	⊕		
Electrical service box	⊕		
Electrical vault	⊕		
Electrical transformer	⊕		

No.	Date	By	Revisions	CKD
03	2023/04/06	CA	ISSUED FOR CONSTRUCTION	CS
02	2023/02/10	TJR	ISSUED FOR ADDENDUM #3	CS
01	2022/11/15	TJR	ISSUED FOR TENDER	CS

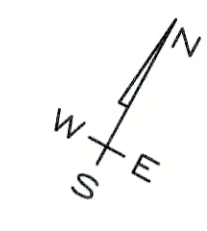


Scale horiz. 1:500
Scale vert. 1:100
Sheet 02 of 05
Drawn by TJR
Approved by JC
Plot date 2023/04/06

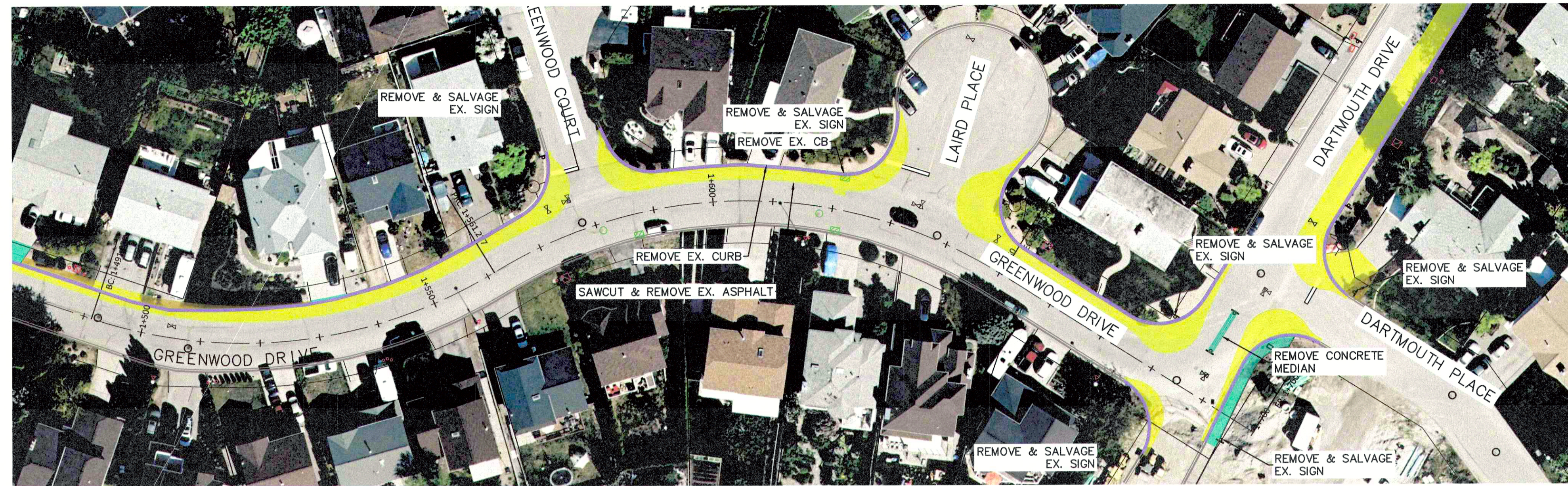
Project
GREENWOOD DRIVE SIDEWALK
Title
GREENWOOD DRIVE - 1+260 to 1+500

Drawing No.
C002
Revision No.
02

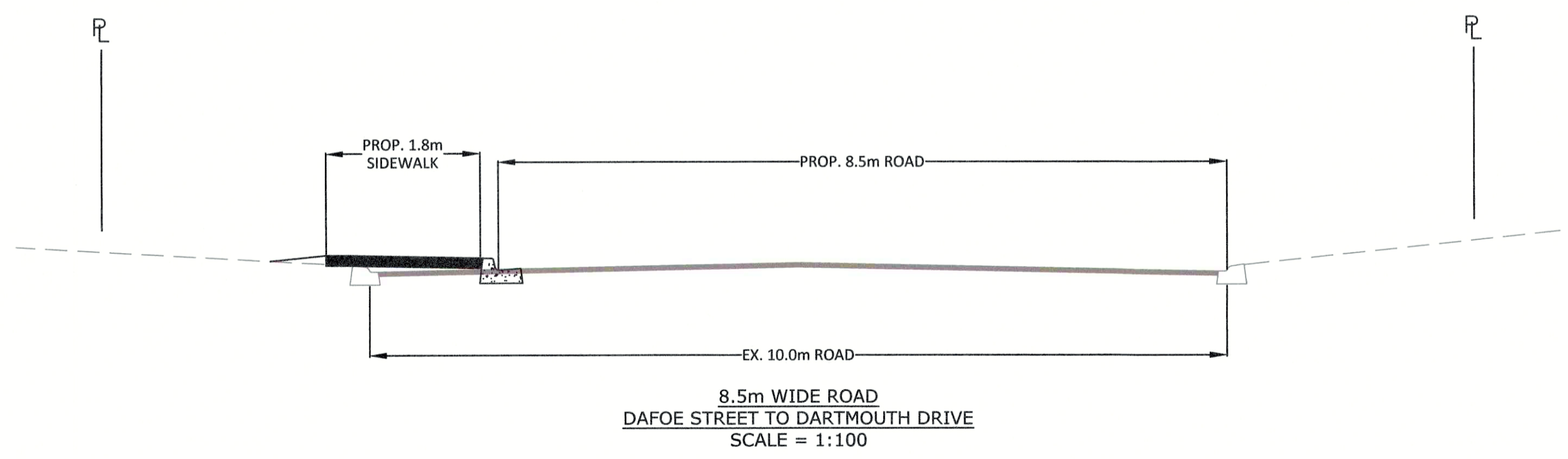
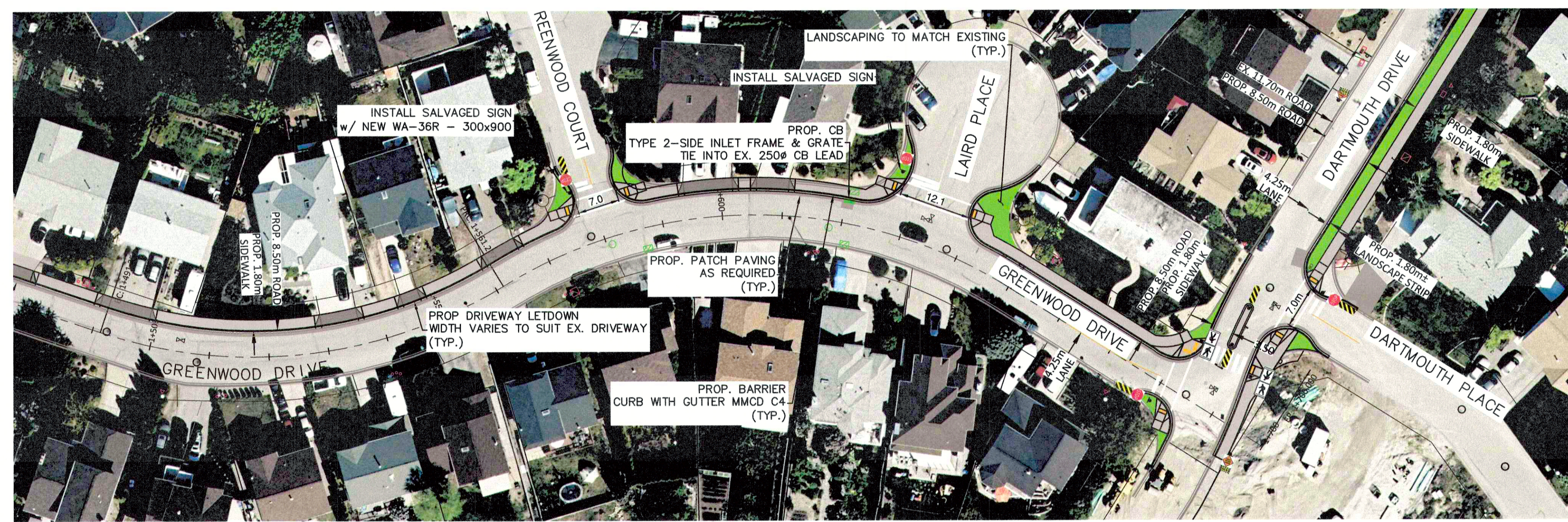
- ASPHALT REMOVAL
- CONCRETE REMOVAL
- CURB REMOVAL
- LINE MARKING REMOVAL
- CLEARING/GRUBBING
- LANDSCAPING



REMOVALS PLAN



INSTALLATION PLAN

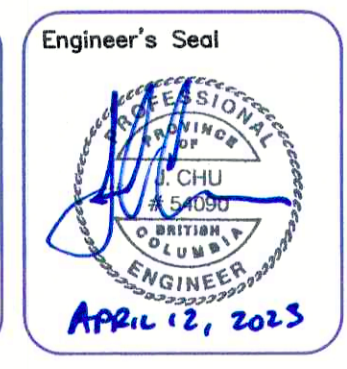


22-013_DESIGN.dwg

PERMIT TO PRACTICE
CITY OF PENTICTON
PERMIT NUMBER: 1003632

Existing		Proposed	
Gas main	—	Sanitary service	—
Electrical cable/telephone	—	Water service	—
Sanitary sewer	—	Sanitary manhole	●
Storm sewer	—	Water curb stop	●
Domestic watermain	—	Sanitary manhole	○
Raw watermain	—	Water hydrant	○
Property line	—	Storm manhole	○
Curb & gutter	—	Domestic watermain	—
Edge of asphalt	—	Raw watermain	—
		Property line	—
		Curb & gutter	—
		Edge of asphalt	—
● Inspection chamber	○ Water valve	■ Sanitary service	■ Water service
○ Sanitary manhole	○ Water curb stop	● S Inspection chamber	● Water curb stop
○ Storm manhole	○ Water hydrant	● Sanitary manhole	● Water hydrant
○ Water air valve	○ Street light	○ Storm manhole	○ Water air valve
○ Power pole	○ Electrical service box	○ Double catch basin	○ Street light
○ Electrical vault	○ Electrical transformer	○ Side inlet catch basin	○ Power pole
		○ Top inlet catch basin	○ Electrical service box
		○ Catch basin manhole	○ Electrical vault
		○ Storm oil interceptor	○ Electrical transformer

No.	Date	By	Revisions	CKD
03	2023/04/06	CA	ISSUED FOR CONSTRUCTION	CS
02	2023/02/10	TJR	ISSUED FOR ADDENDUM #3	CS
01	2022/11/15	TJR	ISSUED FOR TENDER	CS

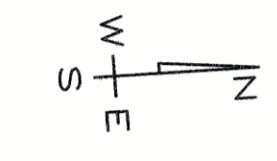


Scale horiz. 1:500
Scale vert. 1:100
Sheet 03 of 05
Drawn by TJR
Approved by JC
Plot date 2023/04/06

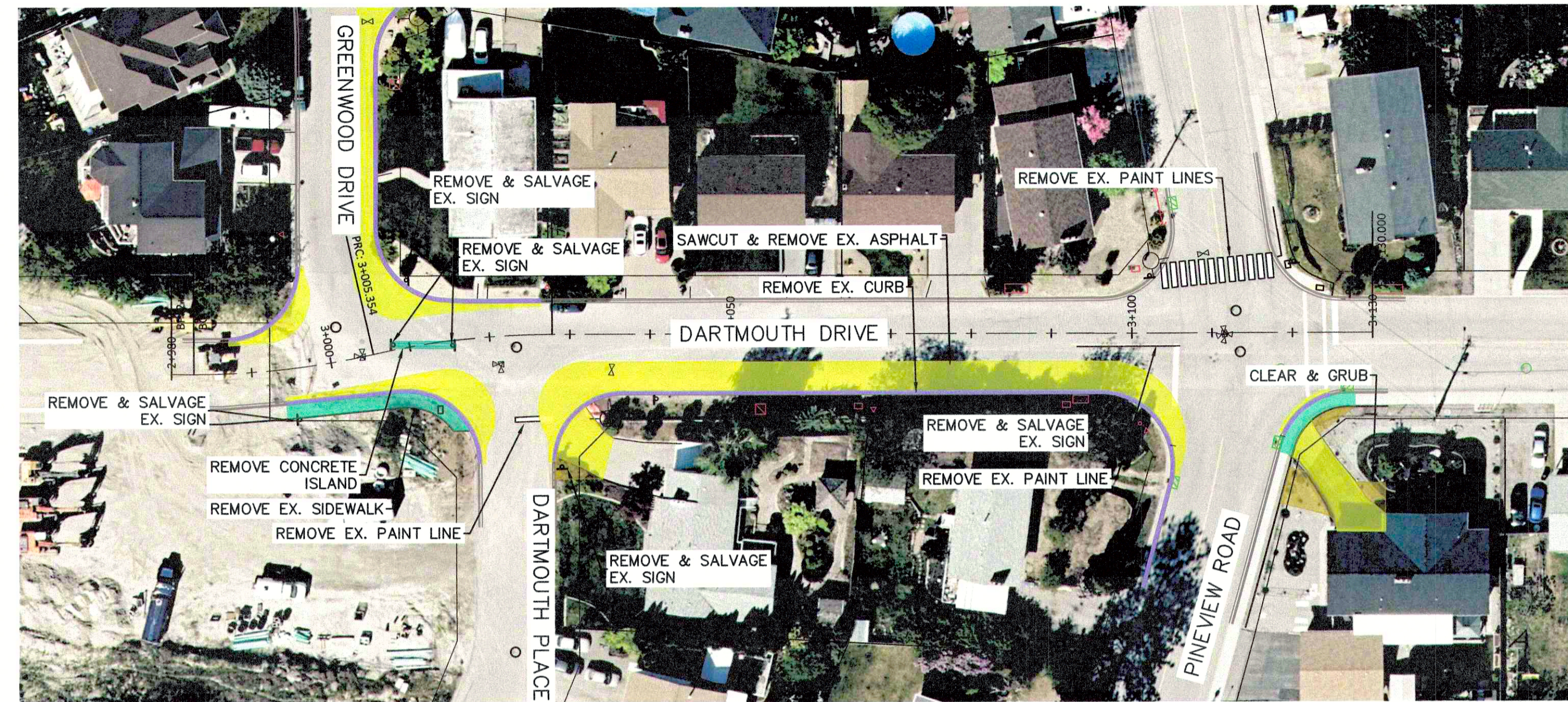
Project
GREENWOOD DRIVE SIDEWALK
Title
GREENWOOD DRIVE - 1+500 TO 1+700

Drawing No.
C003
Revision No.
02

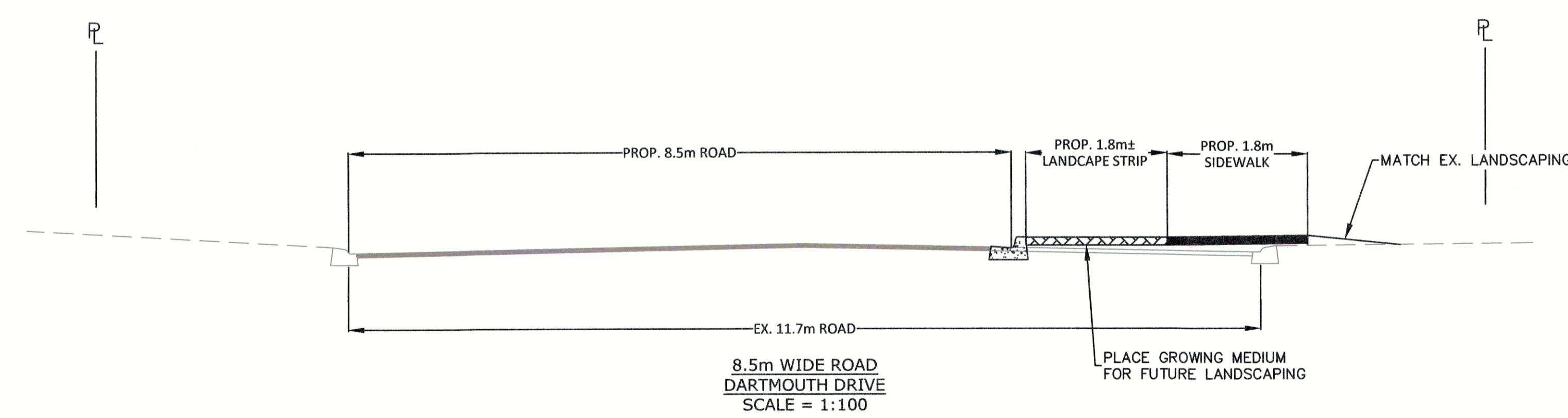
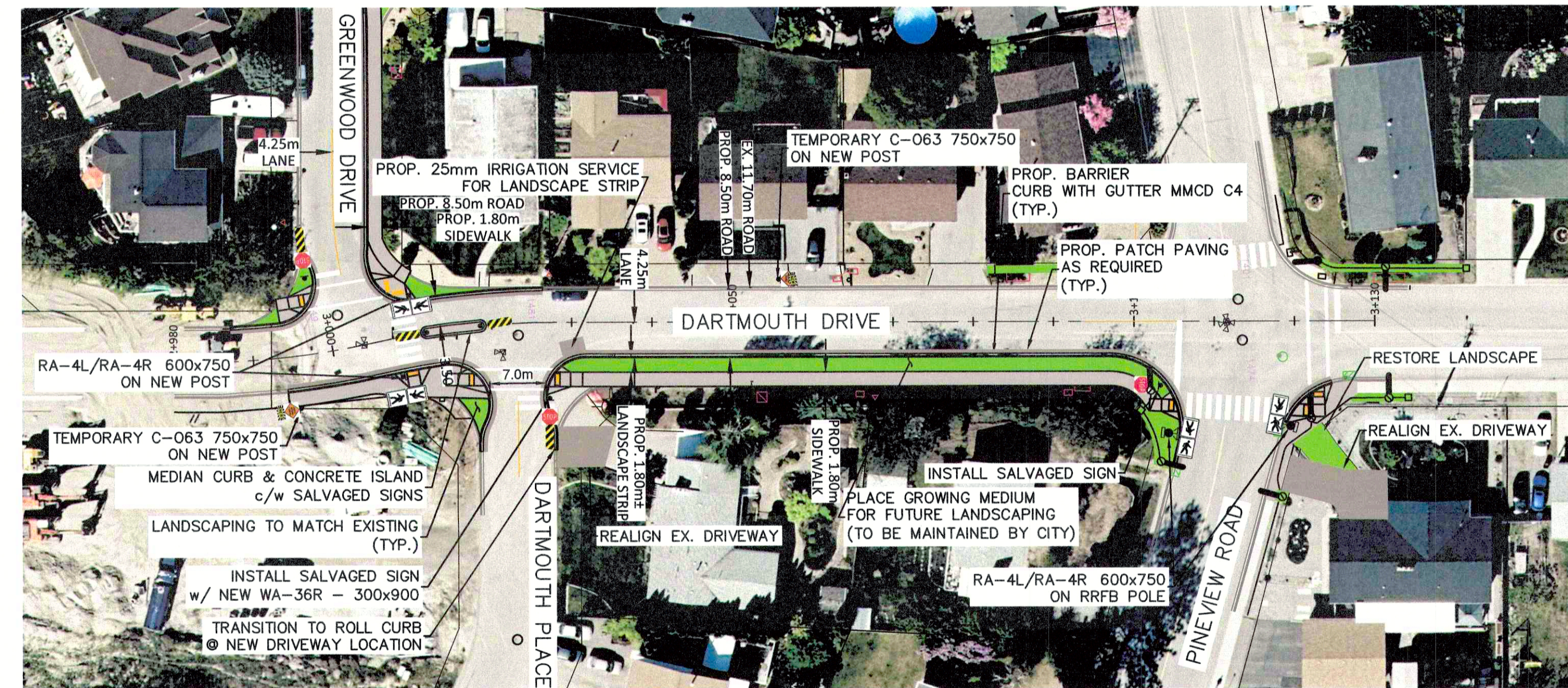
- ASPHALT REMOVAL
- CONCRETE REMOVAL
- CURB REMOVAL
- LINE MARKING REMOVAL
- CLEARING/GRUBBING
- LANDSCAPING



REMOVALS PLAN



INSTALLATION PLAN

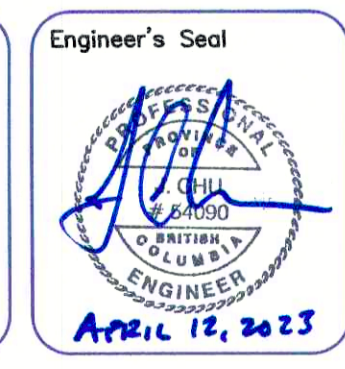


22-013 DESIGN

PERMIT TO PRACTICE
CITY OF PENTICTON
PERMIT NUMBER: 1003632
Engineer & Geoscientist of British Columbia

Existing	Proposed
Gas main	Sanitary service
Electrical cable/telephone	Water service
Sanitary sewer	Water curb stop
Storm sewer	Sanitary manhole
Domestic watermain	Water hydrant
Raw watermain	Water air valve
Property line	Street light
Curb & gutter	Power pole
Edge of asphalt	Electrical service box
Inspection chamber	Electrical vault
Sanitary manhole	Electrical transformer
Storm manhole	Water valve
Water hydrant	Water curb stop
Water air valve	Water hydrant
Power pole	Water air valve
Electrical service box	Street light
Electrical vault	Power pole
Electrical transformer	Electrical service box
Water valve	Electrical vault
Water curb stop	Electrical transformer
Water hydrant	Water valve
Water air valve	Water curb stop
Street light	Water hydrant
Power pole	Water air valve
Electrical service box	Street light
Electrical vault	Power pole
Electrical transformer	Electrical service box
	Electrical vault
	Electrical transformer

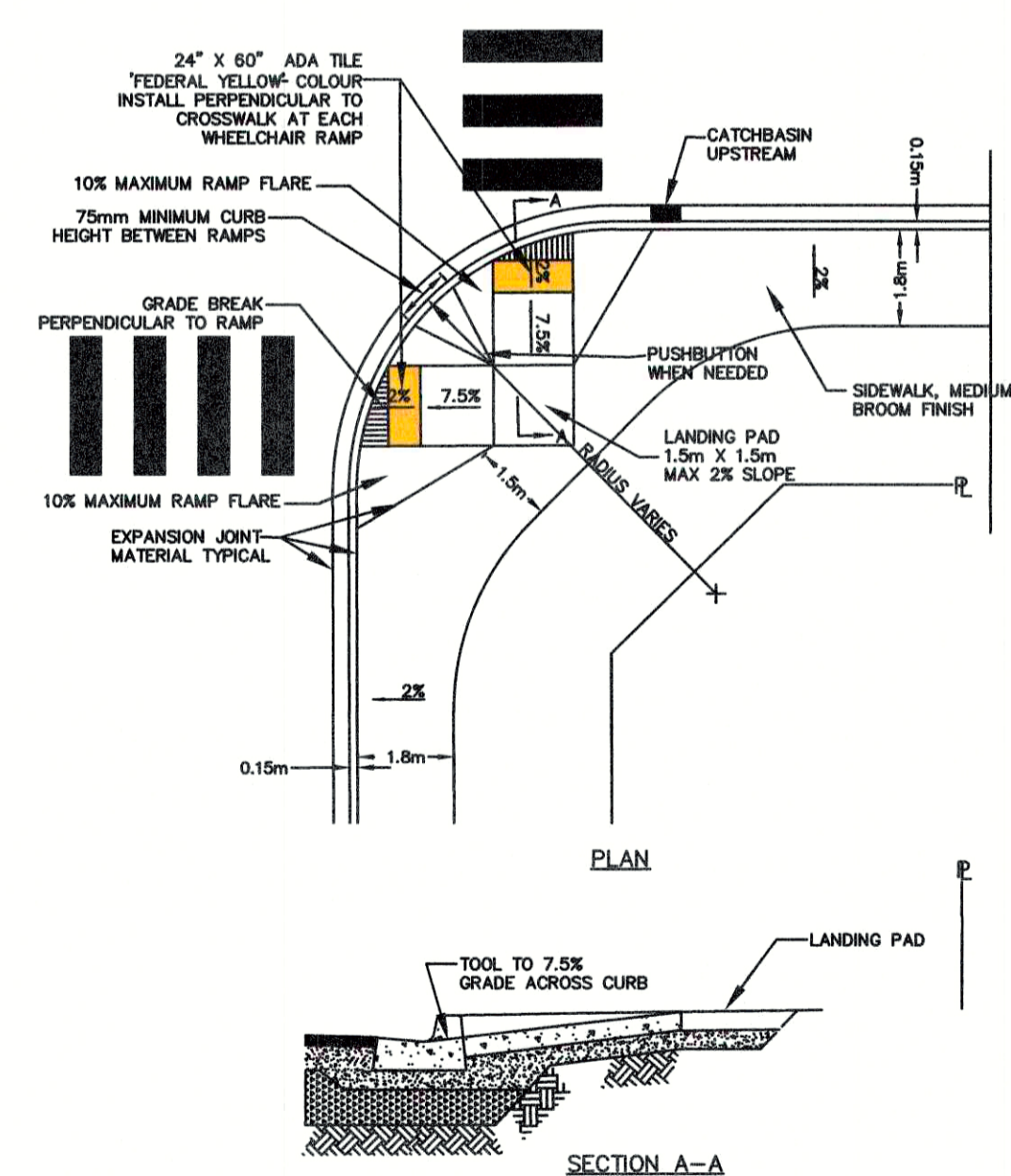
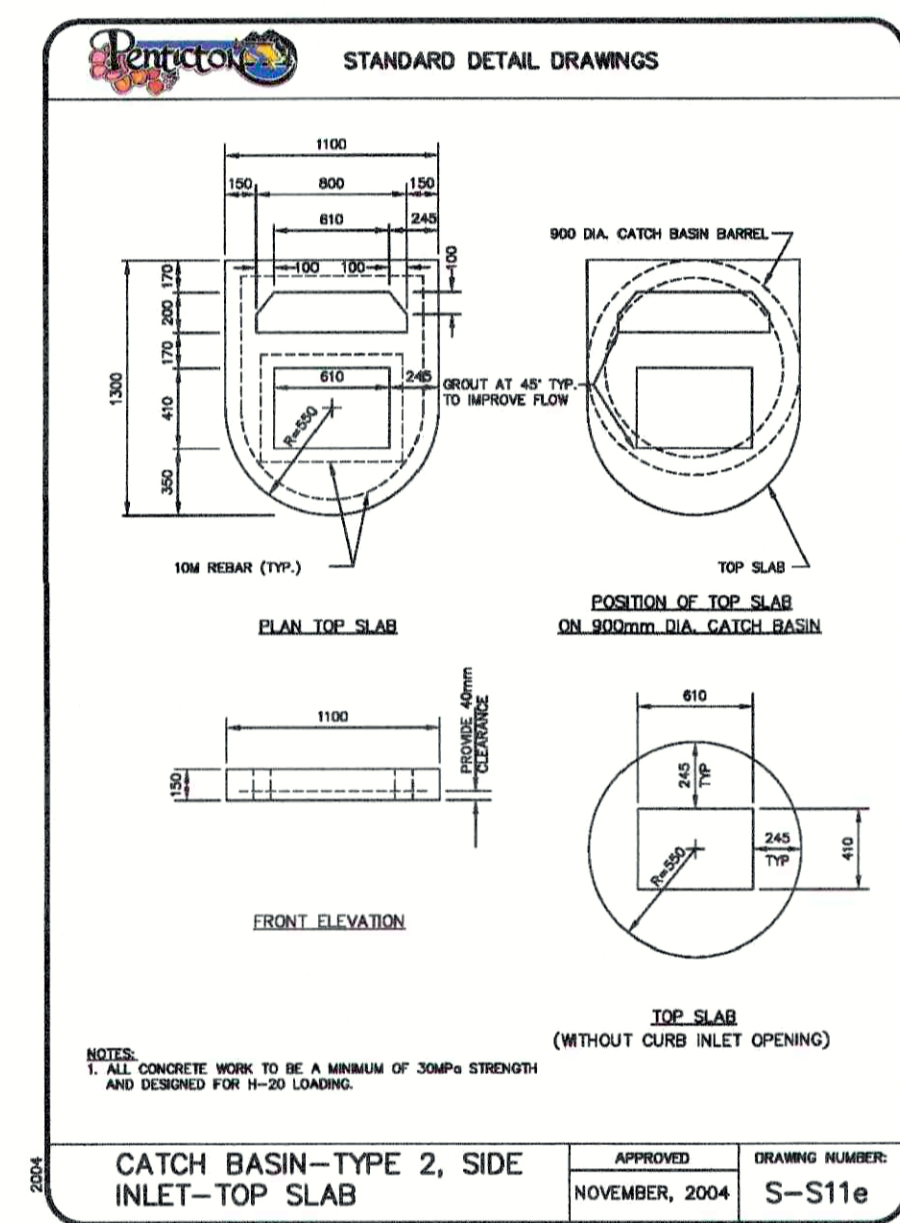
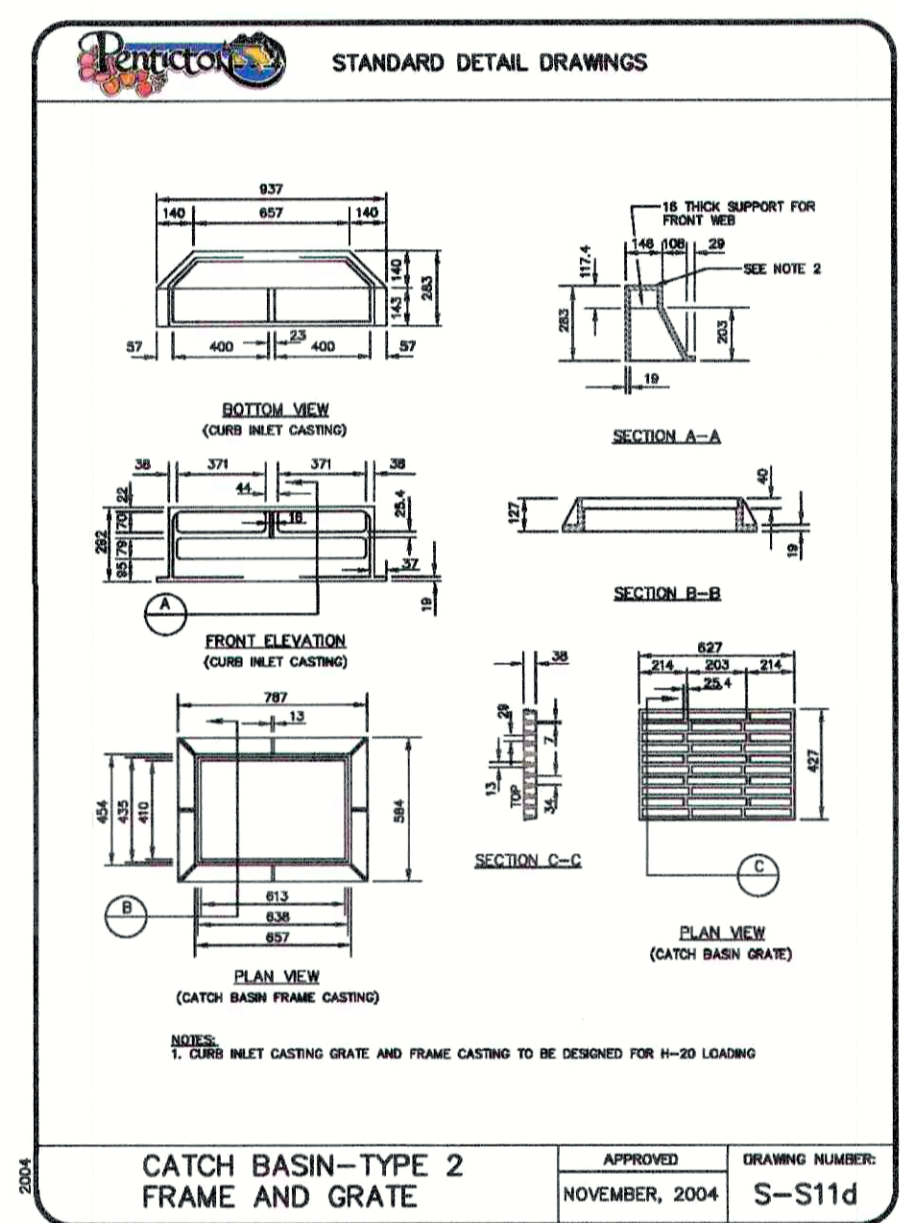
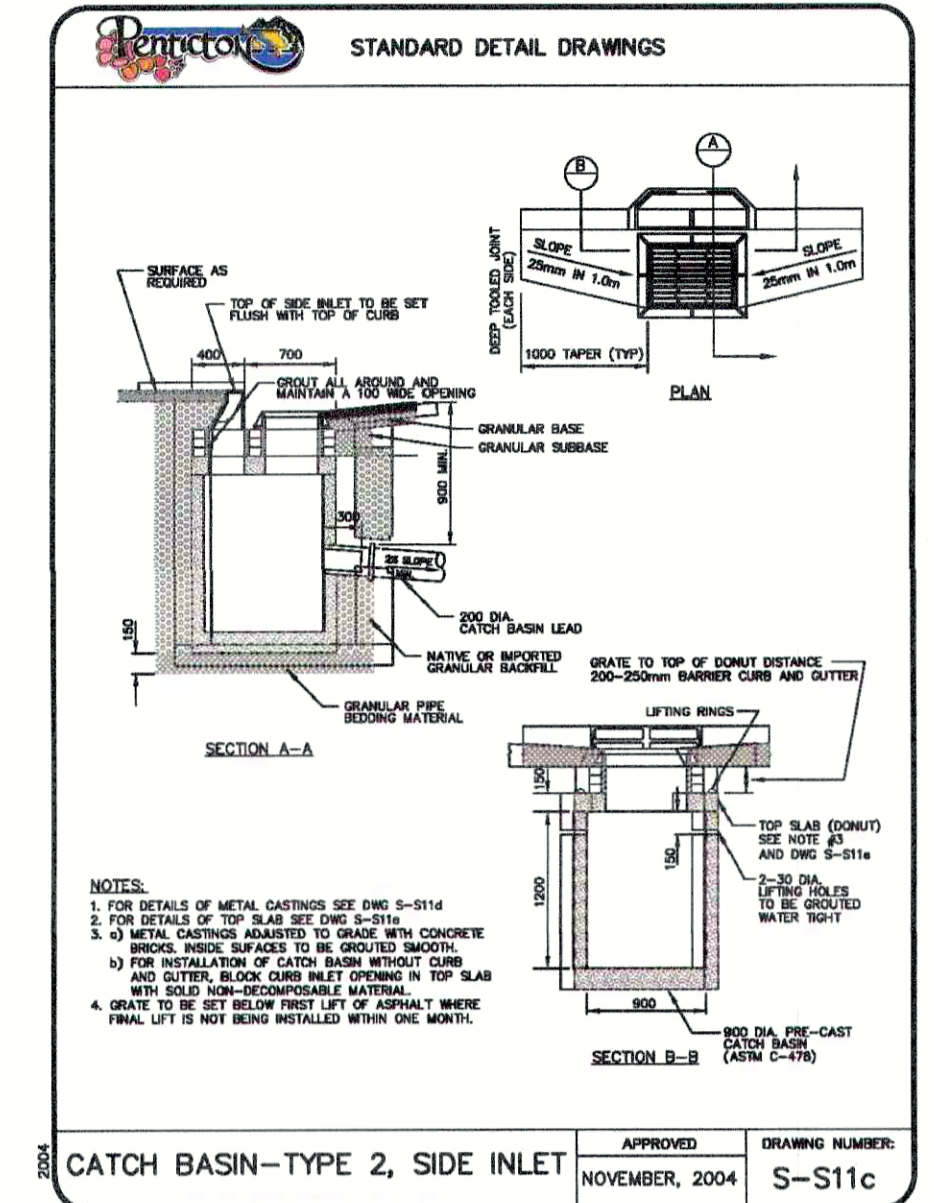
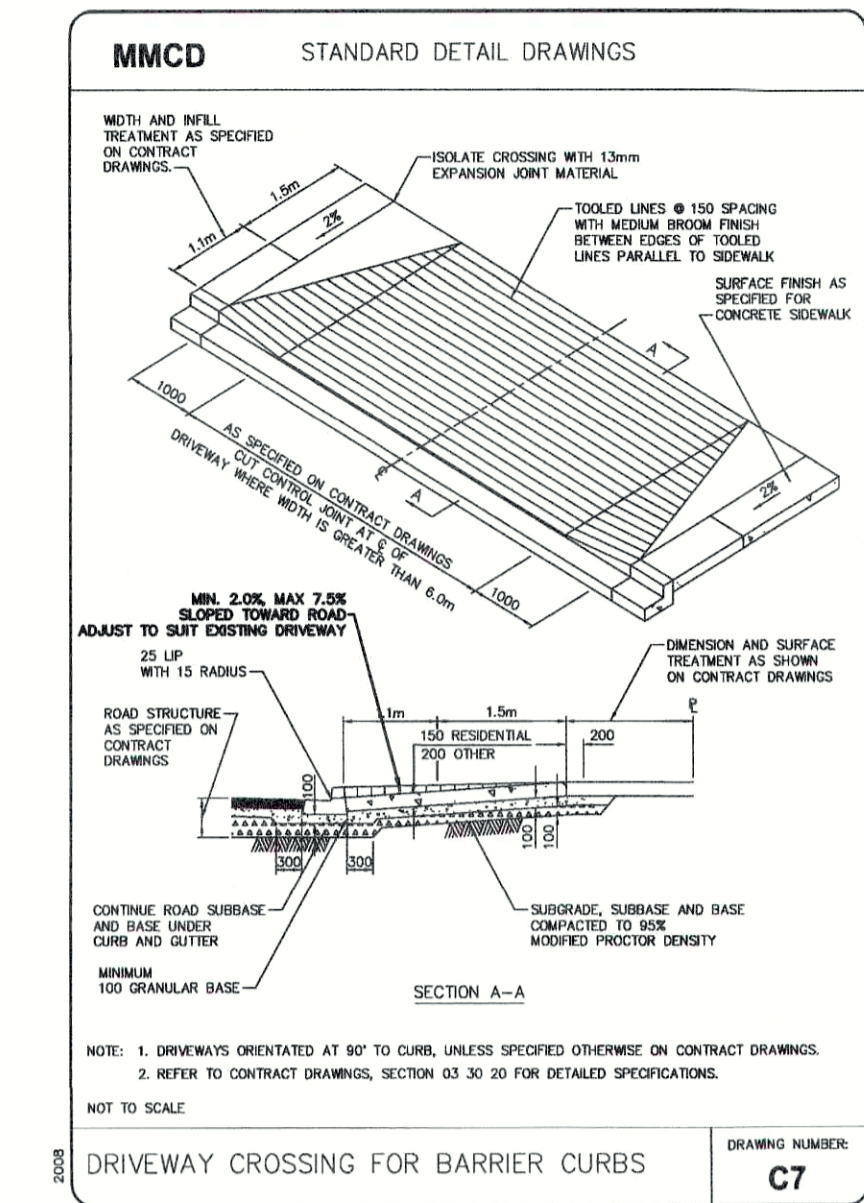
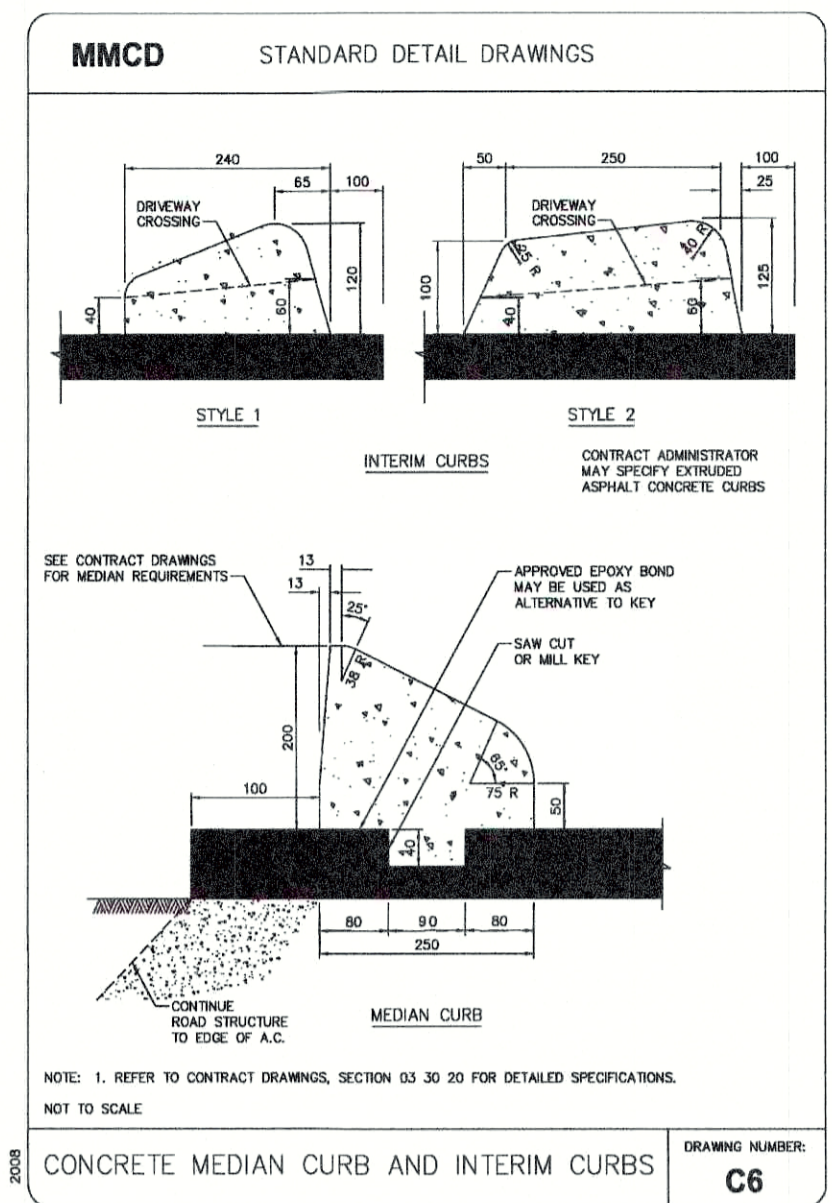
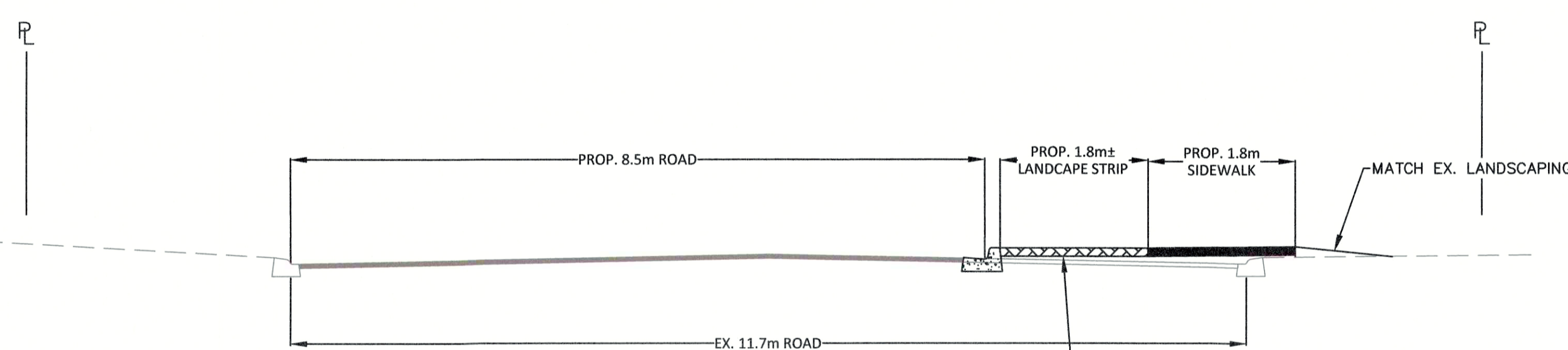
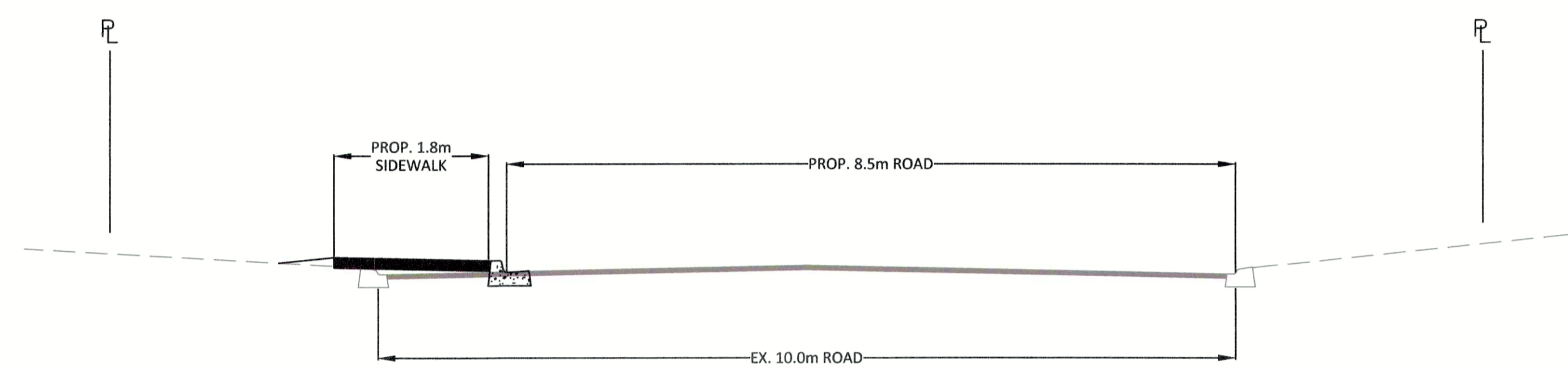
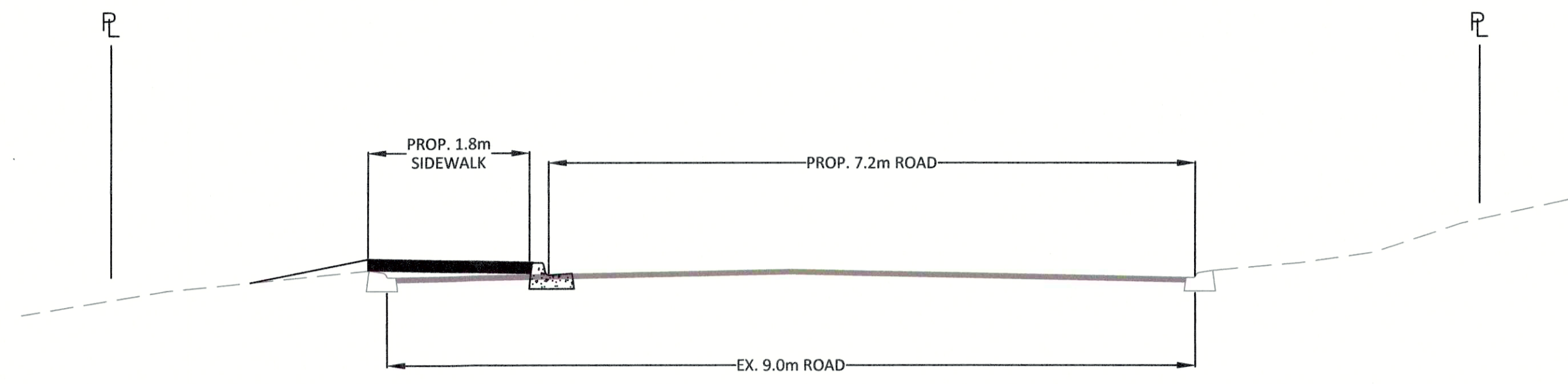
No.	Date	By	Revisions	CKD
03	2023/04/06	CA	ISSUED FOR CONSTRUCTION	CS
02	2023/02/10	TJR	ISSUED FOR ADDENDUM #3	CS
01	2022/10/28	TJR	ISSUED FOR TENDER	CS



Scale horiz. 1:500
Scale vert. 1:100
Sheet 04 of 05
Drawn by TJR
Approved by JC
Plot date 2023/04/06

Project
GREENWOOD DRIVE SIDEWALK
DARTMOUTH DRIVE

Drawing No.
C004
Revision No.
02



PERMIT TO PRACTICE
CITY OF PENTICTON
PERMIT NUMBER: 1003632
Engineers & Geoscientists of British Columbia

Existing	Proposed
Gas main	Sanitary service
Electrical cable/telephone	Water service
Sanitary sewer	Sanitary manhole
Storm sewer	Water curb stop
Domestic watermain	Water hydrant
Raw watermain	Water air valve
Property line	Street light
Curb & gutter	Double catch basin
Edge of asphalt	Side inlet catch basin
	Top inlet catch basin
	Catch basin manhole
	Storm oil interceptor
	Water valve
	Water curb stop
	Water hydrant
	Water air valve
	Street light
	Power pole
	Electrical service box
	Electrical vault
	Electrical transformer

No.	YYYY/MM/DD	Date	By	Revisions	CKD
03	2023/04/06	CA	ISSUED FOR CONSTRUCTION	CS	
02	2023/02/10	TJR	ISSUED FOR ADDENDUM #3	CS	
01	2022/11/15	TJR	ISSUED FOR TENDER	CS	



Engineer's Seal
Scale horiz. AS SHOWN
Scale vert.
Sheet 05 of 05
Drawn by TJR
Approved by JC
Plot date 2023/04/06

Project
GREENWOOD DRIVE SIDEWALK
Title
STANDARD DETAILS

Drawing No.
D001
Revision No.
02