

# 2014 Operating Budget

## Facilities Department

Presented by:  
Chris Schmidt – Facilities Supervisor  
Chuck Loewen – GM Recreation and Facilities

# Facilities Mission Statement

- The Facilities Department plans, designs, builds, manages, operates and maintains City owned buildings to ensure Penticton is an attractive and desirable place to work, play and visit.

# Goals & Objectives

- To provide citizens, visitors and staff with safe, clean facilities in a cost efficient manner.
- To provide maintenance services to 50+ buildings including the Community Centre, McLaren Arena, Museum, Library, City Hall, RCMP, City Yards, Heritage Buildings.
  - Approximate area over 500,000 square feet.

# Goals & Objectives cont'd

- To supervise, operate and provide custodial services for the Community Centre, McLaren Arena and Cleland Theatre operating up to eighteen hours per day and seven days a week.
- To provide a wide variety of building and support services to staff, community groups and special events throughout the City.

# Goals & Objectives cont'd

- To manage contracts providing HVAC, electrical, fire/safety/security and janitorial services to leased, civic and recreation buildings.
- To supervise consultants and contractors who are awarded design and construction work on City buildings.

# Functions & Priorities

- Property management to all civic and recreational facilities with the exception of the water treatment plants.
- Maintenance, repair, custodial, contract management, community group and special event support, health and safety, customer relations and planning.

# Functions & Priorities cont'd

- Capital Program implementation.
- Short term and long range planning for provision of civic facilities.

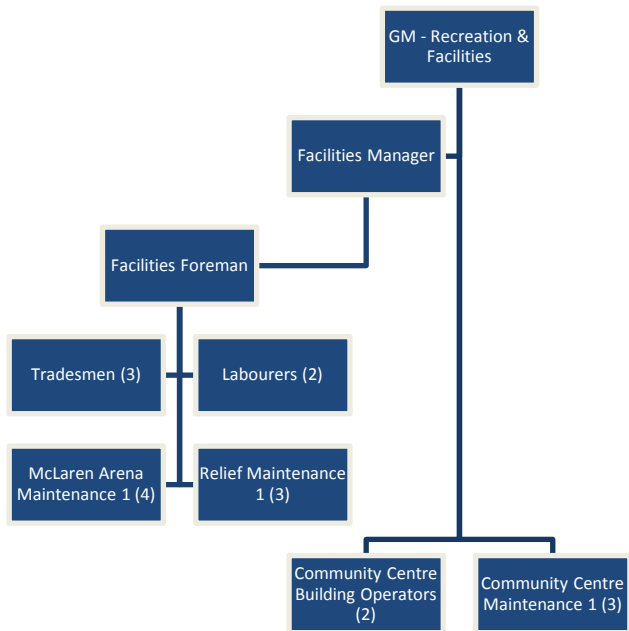
# Functions & Priorities cont'd

- 2014 Priorities
  - Facilities Master Plan implementation
  - City Hall Renovation completion
  - Climate Action Plan and Energy Efficiency
    - » Continuation of Implementation

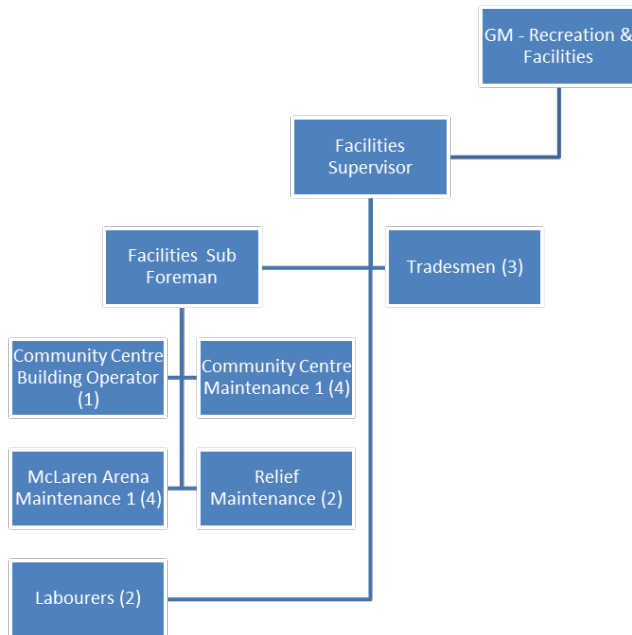


# Facilities Organization Comparison

## 2012



## 2013 & 2014



# A Typical Day in the Life of.....



# 2013 Highlights

## Library Renovations

- Upgrade all lighting
- Interior repainting & re-flooring
- Spatial Consultant Design
- Seismic upgrade to shelving
- DDC upgrade installation
- Energy efficiency
- Accessibility improvement
- Computer network upgrade



# 2013 Highlights cont'd

## S.S. Sicamous Heritage Park

- Restoration of Paddle Wheel Housing / Shroud
- Exterior painting of Tug #6
- Security cameras
- Floating dock to Tug



# 2013 Highlights cont'd

## Roof Repairs & Replacements

- PTCC
- Museum
- City Yards
- Emergency Services Nov '13
- Memorial Arena Assessment
  - Fall 2013 completion Roof Repair Part 1



# 2013 Highlights cont'd

## McLaren Arena

- Flooring replacement
  - Rubberized; Grant received
- Doorway & Door replacement
  - Climate Action; Energy Savings
- Dressing Rooms & Washroom Upgrade
  - Low Flow Fixtures
    - Climate Action; Water Savings



# 2013 Highlights cont'd

## Kiwanis Walking Pier

- “Unscheduled” Repair
  - Decking and railing
  - Temporary safety measures
    - Within 48 hours of incident
- Railing Replacement
  - Full replacement upgrade



# 2013 Highlights cont'd

- **Facilities Master Plan**
  - Completion Dec 2013
- **Ellis Street Project**
  - Conversion from Bus Barn to Gymnasium
  - Unscheduled
- **Skaha Park Concessions**
  - Code upgrade to Lease out
- **City Hall Renovations**
  - Planning
    - Summer / Fall 2013
  - Renovation
    - Fall 2013 / January 2014



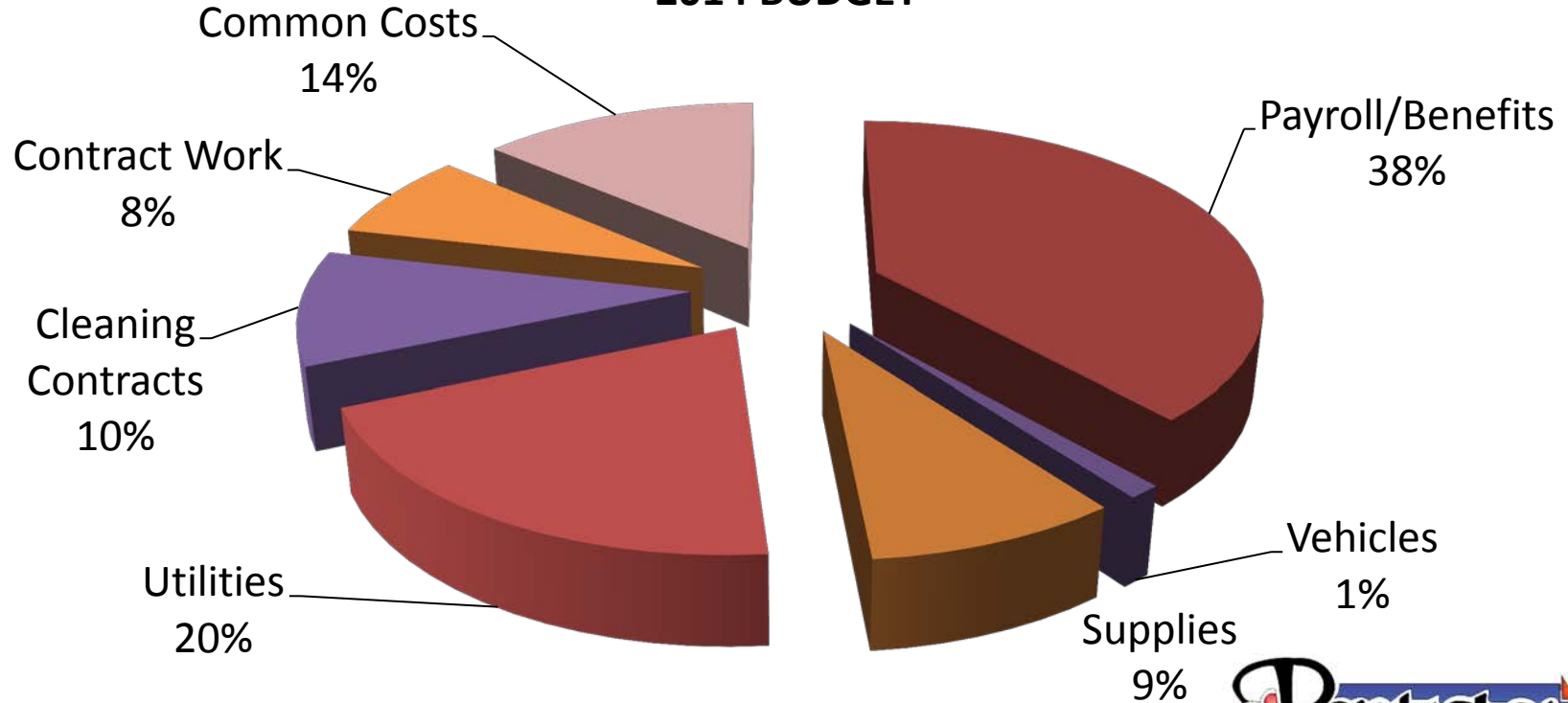
# Expense Categories – 2012 to 2014

| CATEGORY           | 2012 BUDGET        | 2012 ACTUAL        | 2013 BUDGET        | 2013 PROJECT       | 2014 BUDGET        |
|--------------------|--------------------|--------------------|--------------------|--------------------|--------------------|
| Payroll/Benefits   | \$1,092,000        | \$1,066,958        | \$1,129,925        | \$1,106,215        | \$1,072,124        |
| Vehicles           | \$33,000           | \$5,500            | \$33,000           | \$33,000           | \$33,000           |
| Supplies           | \$230,700          | \$232,463          | \$253,750          | \$207,979          | \$246,500          |
| Utilities          | \$634,050          | \$545,972          | \$614,850          | \$570,132          | \$557,000          |
| Cleaning Contracts | \$340,300          | \$241,113          | \$306,000          | \$296,759          | \$279,050          |
| Contract Work      | \$236,500          | \$227,528          | \$260,500          | \$233,770          | \$214,000          |
| Common Costs       | \$369,697          | \$307,751          | \$376,915          | \$385,273          | \$380,915          |
| Misc Costs         | \$49,200           | \$37,893           | \$18,200           | \$15,000           | \$0                |
| <b>TOTAL</b>       | <b>\$2,985,447</b> | <b>\$2,665,178</b> | <b>\$2,993,140</b> | <b>\$2,848,128</b> | <b>\$2,782,589</b> |



# Expense Category % of Total

2014 BUDGET



# Budgets By General & Specific Sites/Facilities

The following 5 slides provide: 2013 Budget, 2013 Projection & 2014 Budget numbers that work up to the Facilities Department Total.

# General & Specific Facilities

|                                                          | 2013 Budget    | 2013 Projected | 2014 Budget    |
|----------------------------------------------------------|----------------|----------------|----------------|
| General Facilities - General Duties                      | 79,150         | 79,150         | 0              |
| General Facilities - Professional Services - consultants | 0              |                |                |
| General Facilities - Professional Services - contractors | 0              |                |                |
| General Facilities - Stationery and supplies             | 4,000          | 4,000          | 4,000          |
| General Facilities - Vehicle Allowances                  | 33,000         | 33,000         | 33,000         |
| General Facilities - General Duties - exempt             | 88,375         | 88,375         | 67,525         |
|                                                          | <b>204,525</b> | <b>204,525</b> | <b>104,525</b> |

# General & Specific Facilities Cont'd

|                                                  | 2013 Budget | 2013 Projected | 2014 Budget |
|--------------------------------------------------|-------------|----------------|-------------|
| Non-Recreational Facilities- City Hall           | 192,000     | 188,000        | 182,499     |
| Non- Recreational Facilities- City Houses        | 18,750      | 5,543          | 9,500       |
| Non- Recreational Facilities- Dog Pound          | 1,250       | 31             | 1,600       |
| Non-Recreational Facilities - Emergency Measures | 1,700       | 1,200          | 1,700       |
| Non-Recreational Facilities - Fire Hall # 1      | 51,900      | 35,200         | 47,700      |
| Non-Recreational Facilities - Fire Hall # 2      | 38,000      | 26,500         | 35,900      |
| Non-Recreational Facilities - Misc Sites         | 319,000     | 279,682        | 307,700     |
| Non-Recreational Facilities - RCMP Building      | 208,000     | 189,245        | 194,000     |
| Non-Recreational Facilities - Yards & Warehouse  | 159,500     | 172,000        | 152,000     |

# General & Specific Facilities Cont'd

|                                                  | 2013 Budget | 2013 Projected | 2014 Budget |
|--------------------------------------------------|-------------|----------------|-------------|
| Recreational Facilities - 500 Edmonton Ave       | 2,400       | 900            | 2,400       |
| Recreational Facilities - Bathhouse              | 224,500     | 200,550        | 225,500     |
| Recreational Facilities - Community Centre       | 803,900     | 860,000        | 801,900     |
| Recreational Facilities - Curling Club Building  | 10,691      | 7,500          | 10,691      |
| Recreational Facilities - Edmonton Ave Centre    | 17,700      | 9,350          | 17,700      |
| Recreational Facilities - Gyro Band Shell        | 9,300       | 6,800          | 9,300       |
| Recreational Facilities - Indoor Soccer Facility | 10,000      | 12,614         | 10,000      |
| Recreational Facilities - Jubilee Pavilion       | 13,200      | 10,902         | 13,200      |
| Recreational Facilities - Library/Museum Complex | 194,000     | 171,923        | 178,000     |

# General & Specific Facilities Cont'd

|                                                               | 2013 Budget | 2013 Projected | 2014 Budget |
|---------------------------------------------------------------|-------------|----------------|-------------|
| Recreational Facilities - Marina - Okanagan                   | 1,000       | 500            | 1,000       |
| Recreational Facilities - Marina - Skaha                      | 8,400       | 7,400          | 8,400       |
| Recreational Facilities - McLaren Arena                       | 410,124     | 390,000        | 390,124     |
| Recreational Facilities - Mobile Concession/Washroom          | 11,200      | 7,850          | 11,200      |
| Recreational Facilities - PYTC                                | 10,500      | 2,700          | 9,250       |
| Recreational Facilities - New Wine/visitor Info Centre        | 29,500      | 35,691         | 31,100      |
| Recreational Facilities - Sicamous Boathouse                  | 2,100       | 1,900          | 1,600       |
| Recreational Facilities - Storage Facilities - Administrative | 0           | 1,600          | 1,600       |
| Recreational Facilities - Walking Pier                        | 12,500      | 12,500         | 12,500      |
| Recreational Facilities - Westminster Centre                  | 11,000      | 5,500          | 10,000      |

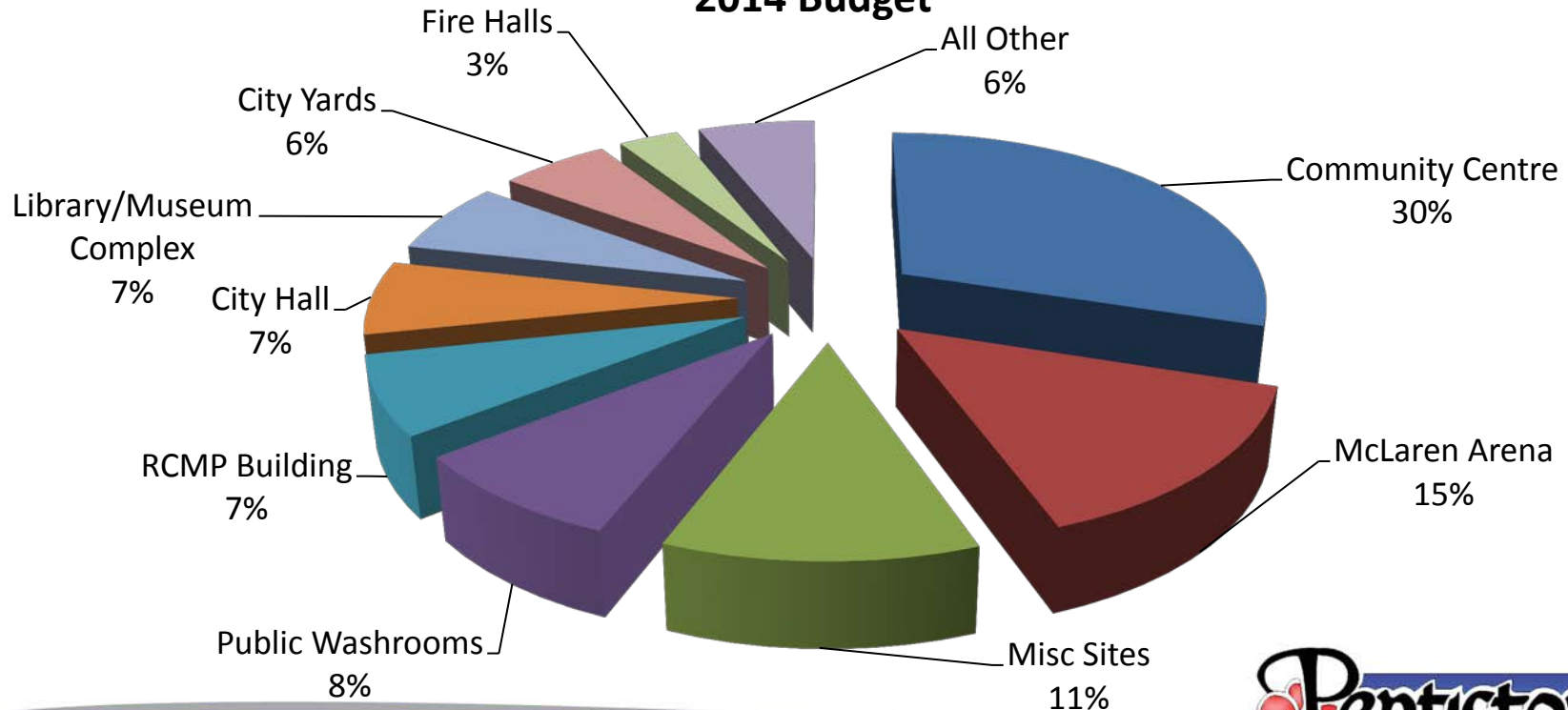
# General & Specific Facilities Cont'd

|                                                       | 2013 Budget      | 2013 Projected   | 2014 Budget      |
|-------------------------------------------------------|------------------|------------------|------------------|
| Recreational Facilities - Vandalism Public Facilities | 15,000           |                  |                  |
| Recreational Facilities - Vandalism Rec Facilities    | 1,500            |                  |                  |
| <b>Total Facilities</b>                               | <b>2,993,140</b> | <b>2,848,128</b> | <b>2,782,589</b> |



# Expense By Site % to Total

## 2014 Budget



# Appendices

- Individual budgets per 29 sites.
- Represents the work up to final numbers in presentation.
- Provided for informational purposes and back up data.

# General Facilities

|                                                          | <b>2013 Budget</b> | <b>2013 Projection</b> | <b>2014 Budget</b> |
|----------------------------------------------------------|--------------------|------------------------|--------------------|
| General Facilities - General Duties                      | 79,150             | 79,150                 | 0                  |
| General Facilities - Professional Services - consultants | 0                  |                        |                    |
| General Facilities - Professional Services - contractors | 0                  |                        |                    |
| General Facilities - Stationery and supplies             | 4,000              | 4,000                  | 4,000              |
| General Facilities - Vehicle Allowances                  | 33,000             | 33,000                 | 33,000             |
| General Facilities - General Duties - exempt             | 88,375             | 88,375                 | 67,525             |
|                                                          | <b>204,525</b>     | <b>204,525</b>         | <b>104,525</b>     |

# City Houses

|                                                                                     | 2013 Budget   | 2013 Projection | 2014 Budget  |
|-------------------------------------------------------------------------------------|---------------|-----------------|--------------|
| Non-Recreational Facilities - City Houses - Electricity                             | 1,250         | 1,250           |              |
| Non-Recreational Facilities - City Houses - Facility maint. and repair - electrical | 3,500         | 1,863           | 500          |
| Non-Recreational Facilities - City Houses - Facility maint. and repair - envelope   | 0             | 670             | 500          |
| Non-Recreational Facilities - City Houses - Facility maint. and repair - HVAC       | 0             | 42              | 500          |
| Non-Recreational Facilities - City Houses - Facility maint. and repair - other      | 0             | 1,010           | 1,500        |
| Non-Recreational Facilities - City Houses - Facility maint. and repair - plumbing   | 0             | 0               | 500          |
| Non-Recreational Facilities - City Houses - General tool repair & replacement       | 0             | 0               |              |
| Non-Recreational Facilities - City Houses - Janitor                                 | 0             | 0               |              |
| Non-Recreational Facilities - City Houses - Natural gas                             | 0             | 0               |              |
| Non-Recreational Facilities - City Houses - Professional Services - consultants     | 0             | 0               |              |
| Non-Recreational Facilities - City Houses - Professional Services - contractors     | 10,000        | 396             | 5,000        |
| Non-Recreational Facilities - City Houses - Property taxes - city sites             | 0             | 0               |              |
| Non-Recreational Facilities - City Houses - Safety Equipment                        | 0             | 63              |              |
| Non-Recreational Facilities - City Houses - Stationery and supplies                 | 4,000         | 250             | 1,000        |
| Non-Recreational Facilities - City Houses - Telephone and alarm maintenance         | 0             | 0               |              |
| Non-Recreational Facilities - City Houses - Vandalism                               | 0             | 0               |              |
| Non-Recreational Facilities - City Houses - Vehicle Allowances                      | 0             | 0               |              |
| Non-Recreational Facilities - City Houses - Waste Removal                           | 0             | 0               |              |
| Non-Recreational Facilities - City Houses - Interior finishes                       | 0             | 0               |              |
|                                                                                     | <b>18,750</b> | <b>5,543</b>    | <b>9,500</b> |

# City Hall

|                                                                                   | 2013 Budget    | 2013 Projection | 2014 Budget    |
|-----------------------------------------------------------------------------------|----------------|-----------------|----------------|
| Non-Recreational Facilities - City Hall - Electricity                             | 55,500         | 50,000          | 50,000         |
| Non-Recreational Facilities - City Hall - Facility maint. and repair - electrical | 0              | 5,000           | 17,833         |
| Non-Recreational Facilities - City Hall - Facility maint. and repair - envelope   | 0              | 15,000          | 15,000         |
| Non-Recreational Facilities - City Hall - Facility maint. and repair - HVAC       | 53,500         | 38,526          | 17,833         |
| Non-Recreational Facilities - City Hall - Facility maint. and repair - other      | 10,000         | 10,000          | 10,000         |
| Non-Recreational Facilities - City Hall - Facility maint. and repair - plumbing   | 0              | 0               | 7,833          |
| Non-Recreational Facilities - City Hall - General tool repair & replacement       | 15,000         | 15,000          | 0              |
| Non-Recreational Facilities - City Hall - Janitor                                 | 36,000         | 32,000          | 32,000         |
| Non-Recreational Facilities - City Hall - Natural gas                             | 0              | 0               |                |
| Non-Recreational Facilities - City Hall - Professional Services - consultants     | 0              | 0               |                |
| Non-Recreational Facilities - City Hall - Professional Services - contractors     | 22,000         | 22,000          | 22,000         |
| Non-Recreational Facilities - City Hall - Property taxes - city sites             | 0              | 0               |                |
| Non-Recreational Facilities - City Hall - Safety Equipment                        | 0              | 83              |                |
| Non-Recreational Facilities - City Hall - Stationery and supplies                 | 0              | -1              |                |
| Non-Recreational Facilities - City Hall - Telephone and alarm maintenance         | 0              | 0               |                |
| Non-Recreational Facilities - City Hall - Vandalism                               | 0              | 83              | 0              |
| Non-Recreational Facilities - City Hall - Vehicle Allowances                      | 0              | 0               |                |
| Non-Recreational Facilities - City Hall - Waste Removal                           | 0              | 204             |                |
| Non-Recreational Facilities - City Hall - Elevator maintenance                    | 0              | 0               |                |
| Non-Recreational Facilities - City Hall - Interior Finishes                       | 0              | 104             | 10,000         |
|                                                                                   | <b>192,000</b> | <b>188,000</b>  | <b>182,499</b> |

# Dog Pound

|                                                                                   | 2013 Budget  | 2013 Projection | 2014 Budget  |
|-----------------------------------------------------------------------------------|--------------|-----------------|--------------|
| Non-Recreational Facilities - Dog Pound - Electricity                             | 0            | -119            |              |
| Non-Recreational Facilities - Dog Pound - Facility maint. and repair - electrical | 400          | 150             | 150          |
| Non-Recreational Facilities - Dog Pound - Facility maint. and repair - envelope   | 0            | 0               | 0            |
| Non-Recreational Facilities - Dog Pound - Facility maint. and repair - HVAC       | 0            | 0               | 150          |
| Non-Recreational Facilities - Dog Pound - Facility maint. and repair - other      | 0            | 0               | 100          |
| Non-Recreational Facilities - Dog Pound - Facility maint. and repair - plumbing   | 0            | 0               | 200          |
| Non-Recreational Facilities - Dog Pound - General tool repair & replacement       | 250          | 0               | 0            |
| Non-Recreational Facilities - Dog Pound - Janitor                                 | 0            | 0               | 400          |
| Non-Recreational Facilities - Dog Pound - Natural gas                             | 0            | 0               |              |
| Non-Recreational Facilities - Dog Pound - Professional Services - consultants     | 0            | 0               |              |
| Non-Recreational Facilities - Dog Pound - Professional Services - contractors     | 600          | 0               | 600          |
| Non-Recreational Facilities - Dog Pound - Property taxes - city sites             | 0            | 0               |              |
| Non-Recreational Facilities - Dog Pound - Safety Equipment                        | 0            | 0               |              |
| Non-Recreational Facilities - Dog Pound - Stationery and supplies                 | 0            | 0               |              |
| Non-Recreational Facilities - Dog Pound - Telephone and alarm maintenance         | 0            | 0               |              |
| Non-Recreational Facilities - Dog Pound - Vandalism                               | 0            | 0               |              |
| Non-Recreational Facilities - Dog Pound - Vehicle Allowances                      | 0            | 0               |              |
| Non-Recreational Facilities - Dog Pound - Waste Removal                           | 0            | 0               |              |
| Non-Recreational Facilities - Dog Pound - Interior Finishes                       | 0            | 0               |              |
|                                                                                   | <b>1,250</b> | <b>31</b>       | <b>1,600</b> |

# Emergency Measures

|                                                                                            | 2013 Budget  | 2013 Projection | 2014 Budget  |
|--------------------------------------------------------------------------------------------|--------------|-----------------|--------------|
| Non-Recreational Facilities - Emergency Measures - Electricity                             | 0            | 0               |              |
| Non-Recreational Facilities - Emergency Measures - Facility maint. and repair - electrical | 0            | 0               |              |
| Non-Recreational Facilities - Emergency Measures - Facility maint. and repair - envelope   | 0            | 0               |              |
| Non-Recreational Facilities - Emergency Measures - Facility maint. and repair - HVAC       | 0            | 0               |              |
| Non-Recreational Facilities - Emergency Measures - Facility maint. and repair - other      | 0            | 0               | 600          |
| Non-Recreational Facilities - Emergency Measures - Facility maint. and repair - plumbing   | 0            | 0               |              |
| Non-Recreational Facilities - Emergency Measures - General tool repair & replacement       | 500          | 0               |              |
| Non-Recreational Facilities - Emergency Measures - Janitor                                 | 0            | 0               |              |
| Non-Recreational Facilities - Emergency Measures - Natural gas                             | 0            | 0               |              |
| Non-Recreational Facilities - Emergency Measures - Professional Services - consultants     | 0            | 0               |              |
| Non-Recreational Facilities - Emergency Measures - Professional Services - contractors     | 1,200        | 1,200           | 600          |
| Non-Recreational Facilities - Emergency Measures - Property taxes - city sites             | 0            | 0               |              |
| Non-Recreational Facilities - Emergency Measures - Safety Equipment                        | 0            | 0               |              |
| Non-Recreational Facilities - Emergency Measures - Stationery and supplies                 | 0            | 0               | 500          |
| Non-Recreational Facilities - Emergency Measures - Telephone and alarm maintenance         | 0            | 0               |              |
| Non-Recreational Facilities - Emergency Measures - Vandalism                               | 0            | 0               |              |
| Non-Recreational Facilities - Emergency Measures - Vehicle Allowances                      | 0            | 0               |              |
| Non-Recreational Facilities - Emergency Measures - Waste Removal                           | 0            | 0               |              |
| Non-Recreational Facilities - Emergency Measures - Interior Finishes                       | 0            | 0               |              |
|                                                                                            | <b>1,700</b> | <b>1,200</b>    | <b>1,700</b> |

# Fire Hall #1

|                                                                                       | <b>2013 Budget</b> | <b>2013 Projection</b> | <b>2014 Budget</b> |
|---------------------------------------------------------------------------------------|--------------------|------------------------|--------------------|
| Non-Recreational Facilities - Fire Hall # 1 - Electricity                             | 24,200             | 20,000                 | 20,000             |
| Non-Recreational Facilities - Fire Hall # 1 - Facility maint. and repair - electrical | 0                  | 1,155                  | 1,700              |
| Non-Recreational Facilities - Fire Hall # 1 - Facility maint. and repair - envelope   | 0                  | 0                      | 500                |
| Non-Recreational Facilities - Fire Hall # 1 - Facility maint. and repair - HVAC       | 0                  | 753                    | 1,700              |
| Non-Recreational Facilities - Fire Hall # 1 - Facility maint. and repair - other      | 6,800              | 68                     | 1,200              |
| Non-Recreational Facilities - Fire Hall # 1 - Facility maint. and repair - plumbing   | 0                  | 188                    | 1,700              |
| Non-Recreational Facilities - Fire Hall # 1 - General tool repair & replacement       | 7,500              | 4,090                  |                    |
| Non-Recreational Facilities - Fire Hall # 1 - Janitor                                 | 2,000              | 2,000                  | 2,000              |
| Non-Recreational Facilities - Fire Hall # 1 - Natural gas                             | 0                  | -1,036                 |                    |
| Non-Recreational Facilities - Fire Hall # 1 - Professional Services - consultants     | 6,000              | 1,500                  |                    |
| Non-Recreational Facilities - Fire Hall # 1 - Professional Services - contractors     | 0                  | 870                    | 6,000              |
| Non-Recreational Facilities - Fire Hall # 1 - Property taxes - city sites             | 5,400              | 5,400                  | 5,400              |
| Non-Recreational Facilities - Fire Hall # 1 - Safety Equipment                        | 0                  | 0                      |                    |
| Non-Recreational Facilities - Fire Hall # 1 - Stationery and supplies                 | 0                  | 0                      | 7,500              |
| Non-Recreational Facilities - Fire Hall # 1 - Telephone and alarm maintenance         | 0                  | 0                      |                    |
| Non-Recreational Facilities - Fire Hall # 1 - Vandalism                               | 0                  | 0                      |                    |
| Non-Recreational Facilities - Fire Hall # 1 - Vehicle Allowances                      | 0                  | 0                      |                    |
| Non-Recreational Facilities - Fire Hall # 1 - Waste Removal                           | 0                  | 211                    |                    |
| Non-Recreational Facilities - Fire Hall # 1 - Interior Finishes                       | 0                  | 0                      |                    |
|                                                                                       | <b>51,900</b>      | <b>35,200</b>          | <b>47,700</b>      |



# Fire Hall #2

|                                                                                       | 2013 Budget   | 2013 Projection | 2014 Budget   |
|---------------------------------------------------------------------------------------|---------------|-----------------|---------------|
| Non-Recreational Facilities - Fire Hall # 2 - Electricity                             | 18,100        | 16,000          | 16,000        |
| Non-Recreational Facilities - Fire Hall # 2 - Facility maint. and repair - electrical | 0             | 895             | 2,100         |
| Non-Recreational Facilities - Fire Hall # 2 - Facility maint. and repair - envelope   | 0             | 450             | 1,100         |
| Non-Recreational Facilities - Fire Hall # 2 - Facility maint. and repair - HVAC       | 0             | 0               | 2,100         |
| Non-Recreational Facilities - Fire Hall # 2 - Facility maint. and repair - other      | 8,400         | 0               | 1,000         |
| Non-Recreational Facilities - Fire Hall # 2 - Facility maint. and repair - plumbing   | 0             | 94              | 2,100         |
| Non-Recreational Facilities - Fire Hall # 2 - General tool repair & replacement       | 3,500         | 1,500           |               |
| Non-Recreational Facilities - Fire Hall # 2 - Janitor                                 | 2,000         | 2,000           | 2,000         |
| Non-Recreational Facilities - Fire Hall # 2 - Natural gas                             | 0             | 0               |               |
| Non-Recreational Facilities - Fire Hall # 2 - Professional Services - consultants     | 6,000         | 1,000           |               |
| Non-Recreational Facilities - Fire Hall # 2 - Professional Services - contractors     | 0             | 325             | 6,000         |
| Non-Recreational Facilities - Fire Hall # 2 - Property taxes - city sites             | 0             | 0               |               |
| Non-Recreational Facilities - Fire Hall # 2 - Safety Equipment                        | 0             | 0               |               |
| Non-Recreational Facilities - Fire Hall # 2 - Stationery and supplies                 | 0             | 4,045           | 3,500         |
| Non-Recreational Facilities - Fire Hall # 2 - Telephone and alarm maintenance         | 0             | 0               |               |
| Non-Recreational Facilities - Fire Hall # 2 - Vandalism                               | 0             | 0               |               |
| Non-Recreational Facilities - Fire Hall # 2 - Vehicle Allowances                      | 0             | 0               |               |
| Non-Recreational Facilities - Fire Hall # 2 - Waste Removal                           | 0             | 191             |               |
| Non-Recreational Facilities - Fire Hall # 2 - Interior Finishes                       | 0             | 0               |               |
|                                                                                       | <b>38,000</b> | <b>26,500</b>   | <b>35,900</b> |

# Miscellaneous Sites

|                                                                                    | <b>2013 Budget</b> | <b>2013 Projection</b> | <b>2014 Budget</b> |
|------------------------------------------------------------------------------------|--------------------|------------------------|--------------------|
| Non-Recreational Facilities - Misc Sites - Electricity                             | 14,300             | 11,000                 | 11,000             |
| Non-Recreational Facilities - Misc Sites - Facility maint. and repair - electrical | 0                  | 4,826                  | 8,625              |
| Non-Recreational Facilities - Misc Sites - Facility maint. and repair - envelope   | 0                  | 818                    | 4,000              |
| Non-Recreational Facilities - Misc Sites - Facility maint. and repair - HVAC       | 0                  | 165                    | 8,625              |
| Non-Recreational Facilities - Misc Sites - Facility maint. and repair - other      | 34,500             | 1,912                  | 4,625              |
| Non-Recreational Facilities - Misc Sites - Facility maint. and repair - plumbing   | 0                  | 908                    | 8,625              |
| Non-Recreational Facilities - Misc Sites - General tool repair & replacement       | 12,000             | 0                      |                    |
| Non-Recreational Facilities - Misc Sites - Janitor                                 | 0                  | 76                     |                    |
| Non-Recreational Facilities - Misc Sites - Natural gas                             | 0                  | 145                    |                    |
| Non-Recreational Facilities - Misc Sites - Professional Services - consultants     | 17,000             | 14,300                 | 0                  |
| Non-Recreational Facilities - Misc Sites - Professional Services - contractors     | 0                  | 5,532                  | 9,000              |
| Non-Recreational Facilities - Misc Sites - Property taxes - city sites             | 240,000            | 240,000                | 240,000            |
| Non-Recreational Facilities - Misc Sites - Safety Equipment                        | 0                  | 0                      |                    |
| Non-Recreational Facilities - Misc Sites - Stationery and supplies                 | 1,200              | 0                      | 12,000             |
| Non-Recreational Facilities - Misc Sites - Telephone and alarm maintenance         | 0                  | 0                      |                    |
| Non-Recreational Facilities - Misc Sites - Vandalism                               | 0                  | 0                      |                    |
| Non-Recreational Facilities - Misc Sites - Vehicle Allowances                      | 0                  | 0                      |                    |
| Non-Recreational Facilities - Misc Sites - Waste Removal                           | 0                  | 0                      |                    |
| Non-Recreational Facilities - Misc Sites - Interior Finishes                       | 0                  | 0                      | 1,200              |
|                                                                                    | <b>319,000</b>     | <b>279,682</b>         | <b>307,700</b>     |

# RCMP Building

|                                                                                       | <b>2013 Budget</b> | <b>2013 Projection</b> | <b>2014 Budget</b> |
|---------------------------------------------------------------------------------------|--------------------|------------------------|--------------------|
| Non-Recreational Facilities - RCMP Building - Electricity                             | 54,000             | 42,000                 | 42,000             |
| Non-Recreational Facilities - RCMP Building - Facility maint. and repair - electrical | 0                  | 1,985                  | 7,000              |
| Non-Recreational Facilities - RCMP Building - Facility maint. and repair - envelope   | 0                  | 0                      | 2,000              |
| Non-Recreational Facilities - RCMP Building - Facility maint. and repair - HVAC       | 0                  | 5,012                  | 7,000              |
| Non-Recreational Facilities - RCMP Building - Facility maint. and repair - other      | 28,000             | 18,213                 | 3,000              |
| Non-Recreational Facilities - RCMP Building - Facility maint. and repair - plumbing   | 0                  | 663                    | 7,000              |
| Non-Recreational Facilities - RCMP Building - General tool repair & replacement       | 8,000              | 0                      | 0                  |
| Non-Recreational Facilities - RCMP Building - Janitor                                 | 36,000             | 34,000                 | 34,000             |
| Non-Recreational Facilities - RCMP Building - Natural gas                             | 0                  | 772                    |                    |
| Non-Recreational Facilities - RCMP Building - Professional Services - consultants     | 12,000             | 12,000                 |                    |
| Non-Recreational Facilities - RCMP Building - Professional Services - contractors     | 0                  | 0                      | 12,000             |
| Non-Recreational Facilities - RCMP Building - Property taxes - city sites             | 70,000             | 74,358                 | 70,000             |
| Non-Recreational Facilities - RCMP Building - Safety Equipment                        | 0                  | 0                      |                    |
| Non-Recreational Facilities - RCMP Building - Stationery and supplies                 | 0                  | 0                      | 8,000              |
| Non-Recreational Facilities - RCMP Building - Telephone and alarm maintenance         | 0                  | 0                      |                    |
| Non-Recreational Facilities - RCMP Building - Vandalism                               | 0                  | 0                      |                    |
| Non-Recreational Facilities - RCMP Building - Vehicle Allowances                      | 0                  | 0                      |                    |
| Non-Recreational Facilities - RCMP Building - Waste Removal                           | 0                  | 242                    |                    |
| Non-Recreational Facilities - RCMP Building - Interior Finishes                       | 0                  | 0                      | 2,000              |
|                                                                                       | <b>208,000</b>     | <b>189,245</b>         | <b>194,000</b>     |

# City Yards & Warehouse

|                                                                                           | <b>2013 Budget</b> | <b>2013 Projection</b> | <b>2014 Budget</b> |
|-------------------------------------------------------------------------------------------|--------------------|------------------------|--------------------|
| Non-Recreational Facilities - Yards & Warehouse - Electricity                             | 63,500             | 60,000                 | 60,000             |
| Non-Recreational Facilities - Yards & Warehouse - Facility maint. and repair - electrical | 0                  | 6,527                  | 6,250              |
| Non-Recreational Facilities - Yards & Warehouse - Facility maint. and repair - envelope   | 0                  | 326                    | 2,250              |
| Non-Recreational Facilities - Yards & Warehouse - Facility maint. and repair - HVAC       | 0                  | 6,720                  | 6,250              |
| Non-Recreational Facilities - Yards & Warehouse - Facility maint. and repair - other      | 25,000             | 25,637                 | 2,000              |
| Non-Recreational Facilities - Yards & Warehouse - Facility maint. and repair - plumbing   | 0                  | 94                     | 6,250              |
| Non-Recreational Facilities - Yards & Warehouse - General tool repair & replacement       | 15,000             | 0                      | 0                  |
| Non-Recreational Facilities - Yards & Warehouse - Janitor                                 | 24,000             | 26,686                 | 28,000             |
| Non-Recreational Facilities - Yards & Warehouse - Natural gas                             | 0                  | 154                    |                    |
| Non-Recreational Facilities - Yards & Warehouse - Professional Services - consultants     | 32,000             | 24,000                 |                    |
| Non-Recreational Facilities - Yards & Warehouse - Professional Services - contractors     | 0                  | 0                      | 24,000             |
| Non-Recreational Facilities - Yards & Warehouse - Property taxes - city sites             | 0                  | 0                      |                    |
| Non-Recreational Facilities - Yards & Warehouse - Safety Equipment                        | 0                  | 271                    |                    |
| Non-Recreational Facilities - Yards & Warehouse - Stationery and supplies                 | 0                  | 15,000                 | 15,000             |
| Non-Recreational Facilities - Yards & Warehouse - Telephone and alarm maintenance         | 0                  | 0                      |                    |
| Non-Recreational Facilities - Yards & Warehouse - Vandalism                               | 0                  | 0                      |                    |
| Non-Recreational Facilities - Yards & Warehouse - Vehicle Allowances                      | 0                  | 0                      |                    |
| Non-Recreational Facilities - Yards & Warehouse - Waste Removal                           | 0                  | 2,540                  |                    |
| Non-Recreational Facilities - Yards & Warehouse - Interior Finishes                       | 0                  | 4,046                  | 2,000              |
|                                                                                           | <b>159,500</b>     | <b>172,000</b>         | <b>152,000</b>     |

# 500 Edmonton Avenue

|                                                                                      | 2013 Budget  | 2013 Projection | 2014 Budget  |
|--------------------------------------------------------------------------------------|--------------|-----------------|--------------|
| Recreational Facilities - 500 Edmonton Ave - Electricity                             | 0            | 0               |              |
| Recreational Facilities - 500 Edmonton Ave - Facility maint. and repair - electrical | 0            | 0               |              |
| Recreational Facilities - 500 Edmonton Ave - Facility maint. and repair - envelope   | 0            | 41              |              |
| Recreational Facilities - 500 Edmonton Ave - Facility maint. and repair - HVAC       | 0            | 0               |              |
| Recreational Facilities - 500 Edmonton Ave - Facility maint. and repair - other      | 900          | 431             | 900          |
| Recreational Facilities - 500 Edmonton Ave - Facility maint. and repair - plumbing   | 0            | 0               |              |
| Recreational Facilities - 500 Edmonton Ave - General tool repair & replacement       | 1,500        | 0               |              |
| Recreational Facilities - 500 Edmonton Ave - Janitor                                 | 0            | 0               |              |
| Recreational Facilities - 500 Edmonton Ave - Natural gas                             | 0            | 0               |              |
| Recreational Facilities - 500 Edmonton Ave - Professional Services - consultants     | 0            | 0               |              |
| Recreational Facilities - 500 Edmonton Ave - Professional Services - contractors     | 0            | 386             |              |
| Recreational Facilities - 500 Edmonton Ave - Property taxes - city sites             | 0            | 0               |              |
| Recreational Facilities - 500 Edmonton Ave - Safety Equipment                        | 0            | 42              |              |
| Recreational Facilities - 500 Edmonton Ave - Stationery and supplies                 | 0            | 0               | 1,500        |
| Recreational Facilities - 500 Edmonton Ave - Telephone and alarm maintenance         | 0            | 0               |              |
| Recreational Facilities - 500 Edmonton Ave - Vandalism                               | 0            | 0               |              |
| Recreational Facilities - 500 Edmonton Ave - Vehicle Allowances                      | 0            | 0               |              |
| Recreational Facilities - 500 Edmonton Ave - Waste Removal                           | 0            | 0               |              |
| Recreational Facilities - 500 Edmonton Ave - Interior Finishes                       | 0            | 0               |              |
|                                                                                      | <b>2,400</b> | <b>900</b>      | <b>2,400</b> |

# Public Washrooms

|                                                                               | <b>2013 Budget</b> | <b>2013 Projection</b> | <b>2014 Budget</b> |
|-------------------------------------------------------------------------------|--------------------|------------------------|--------------------|
| Recreational Facilities - Bathhouse - Electricity                             | 17,500             | 17,500                 | 17,500             |
| Recreational Facilities - Bathhouse - Facility maint. and repair - electrical | 0                  |                        | 8,500              |
| Recreational Facilities - Bathhouse - Facility maint. and repair - envelope   | 0                  |                        | 3,000              |
| Recreational Facilities - Bathhouse - Facility maint. and repair - HVAC       | 0                  |                        | 8,500              |
| Recreational Facilities - Bathhouse - Facility maint. and repair - other      | 34,000             | 9,000                  | 4,000              |
| Recreational Facilities - Bathhouse - Facility maint. and repair - plumbing   | 0                  |                        | 8,500              |
| Recreational Facilities - Bathhouse - General tool repair & replacement       | 0                  |                        | 0                  |
| Recreational Facilities - Bathhouse - Janitor                                 | 135,000            | 125,000                | 125,000            |
| Recreational Facilities - Bathhouse - Natural gas                             | 0                  |                        |                    |
| Recreational Facilities - Bathhouse - Professional Services - consultants     |                    |                        |                    |
| Recreational Facilities - Bathhouse - Professional Services - contractors     | 22,000             | 20,000                 | 20,000             |
| Recreational Facilities - Bathhouse - Property taxes - city sites             | 0                  |                        |                    |
| Recreational Facilities - Bathhouse - Safety Equipment                        | 0                  |                        |                    |
| Recreational Facilities - Bathhouse - Stationery and supplies                 | 16,000             | 16,000                 | 16,000             |
| Recreational Facilities - Bathhouse - Telephone and alarm maintenance         | 0                  |                        |                    |
| Recreational Facilities - Bathhouse - Vandalism                               | 15,000             | 13,000                 | 13,000             |
| Recreational Facilities - Bathhouse - Vehicle Allowances                      | 0                  |                        |                    |
| Recreational Facilities - Bathhouse - Waste Removal                           | 0                  |                        |                    |
| Recreational Facilities - Bathhouse - Interior Finishes                       | 0                  |                        | 1,500              |
|                                                                               | <b>239,500</b>     | <b>200,500</b>         | <b>225,500</b>     |

# Community Centre

|                                                                                      | <b>2013 Budget</b> | <b>2013 Projection</b> | <b>2014 Budget</b> |
|--------------------------------------------------------------------------------------|--------------------|------------------------|--------------------|
| Recreational Facilities - Community Centre - Electricity                             | 230,000            | 230,000                | 230,000            |
| Recreational Facilities - Community Centre - Facility maint. and repair - electrical | 0                  | 6,727                  | 10,000             |
| Recreational Facilities - Community Centre - Facility maint. and repair - envelope   | 0                  | 1,555                  | 2,500              |
| Recreational Facilities - Community Centre - Facility maint. and repair - HVAC       | 0                  | 6,105                  | 10,000             |
| Recreational Facilities - Community Centre - Facility maint. and repair - other      | 420,300            | 417,808                | 334,800            |
| Recreational Facilities - Community Centre - Facility maint. and repair - plumbing   | 0                  | 3,457                  | 10,000             |
| Recreational Facilities - Community Centre - General tool repair & replacement       | 120,000            | 120,000                |                    |
| Recreational Facilities - Community Centre - Janitor                                 | 5,600              | 15,220                 | 50,600             |
| Recreational Facilities - Community Centre - Natural gas                             | 0                  | 5,301                  |                    |
| Recreational Facilities - Community Centre - Professional Services - consultants     | 28,000             | 28,000                 |                    |
| Recreational Facilities - Community Centre - Professional Services - contractors     | 0                  | 18,406                 | 28,000             |
| Recreational Facilities - Community Centre - Property taxes - city sites             | 0                  | 0                      |                    |
| Recreational Facilities - Community Centre - Safety Equipment                        | 0                  | 1,066                  |                    |
| Recreational Facilities - Community Centre - Stationery and supplies                 | 0                  | 3,829                  | 120,000            |
| Recreational Facilities - Community Centre - Telephone and alarm maintenance         | 0                  | 0                      |                    |
| Recreational Facilities - Community Centre - Vandalism                               | 1,500              | 986                    | 1,000              |
| Recreational Facilities - Community Centre - Vehicle Allowances                      | 0                  | 0                      |                    |
| Recreational Facilities - Community Centre - Waste Removal                           | 0                  | 385                    |                    |
| Recreational Facilities - Community Centre - Interior Finishes                       | 0                  | 1,155                  | 5,000              |
|                                                                                      | <b>805,400</b>     | <b>860,000</b>         | <b>801,900</b>     |

# Curling Club

|                                                                                           | 2013 Budget   | 2013 Projection | 2014 Budget   |
|-------------------------------------------------------------------------------------------|---------------|-----------------|---------------|
| Recreational Facilities - Curling Club Building - Electricity                             | 0             | 0               |               |
| Recreational Facilities - Curling Club Building - Facility maint. and repair - electrical | 0             | 0               | 1,000         |
| Recreational Facilities - Curling Club Building - Facility maint. and repair - envelope   | 0             | 0               | 500           |
| Recreational Facilities - Curling Club Building - Facility maint. and repair - HVAC       | 0             | 0               | 1,000         |
| Recreational Facilities - Curling Club Building - Facility maint. and repair - other      | 4,000         | 2,179           | 500           |
| Recreational Facilities - Curling Club Building - Facility maint. and repair - plumbing   | 0             | 0               | 1,000         |
| Recreational Facilities - Curling Club Building - General tool repair & replacement       | 1,500         | 0               |               |
| Recreational Facilities - Curling Club Building - Janitor                                 | 0             | 27              |               |
| Recreational Facilities - Curling Club Building - Natural gas                             | 0             | 0               |               |
| Recreational Facilities - Curling Club Building - Professional Services - consultants     | 2,000         | 2,103           |               |
| Recreational Facilities - Curling Club Building - Professional Services - contractors     | 0             | 0               | 2,000         |
| Recreational Facilities - Curling Club Building - Property taxes - city sites             | 3,191         | 3,191           | 3,191         |
| Recreational Facilities - Curling Club Building - Safety Equipment                        | 0             | 0               |               |
| Recreational Facilities - Curling Club Building - Stationery and supplies                 | 0             | 0               | 1,500         |
| Recreational Facilities - Curling Club Building - Telephone and alarm maintenance         | 0             | 0               |               |
| Recreational Facilities - Curling Club Building - Vandalism                               | 0             | 0               |               |
| Recreational Facilities - Curling Club Building - Vehicle Allowances                      | 0             | 0               |               |
| Recreational Facilities - Curling Club Building - Waste Removal                           | 0             | 0               |               |
| Recreational Facilities - Curling Club Building - Interior Finishes                       | 0             | 0               |               |
|                                                                                           | <b>10,691</b> | <b>7,500</b>    | <b>10,691</b> |



# Edmonton Avenue Centre

|                                                                                         | <b>2013 Budget</b> | <b>2013 Projection</b> | <b>2014 Budget</b> |
|-----------------------------------------------------------------------------------------|--------------------|------------------------|--------------------|
| Recreational Facilities - Edmonton Ave Centre - Electricity                             | 10,100             | 8,500                  | 10,100             |
| Recreational Facilities - Edmonton Ave Centre - Facility maint. and repair - electrical | 0                  | 0                      | 850                |
| Recreational Facilities - Edmonton Ave Centre - Facility maint. and repair - envelope   | 0                  | 0                      | 450                |
| Recreational Facilities - Edmonton Ave Centre - Facility maint. and repair - HVAC       | 0                  | 0                      | 850                |
| Recreational Facilities - Edmonton Ave Centre - Facility maint. and repair - other      | 3,400              | 0                      | 400                |
| Recreational Facilities - Edmonton Ave Centre - Facility maint. and repair - plumbing   | 0                  | 0                      | 850                |
| Recreational Facilities - Edmonton Ave Centre - General tool repair & replacement       | 1,500              | 0                      |                    |
| Recreational Facilities - Edmonton Ave Centre - Janitor                                 | 1,200              | 850                    | 1,200              |
| Recreational Facilities - Edmonton Ave Centre - Natural gas                             | 0                  | 0                      |                    |
| Recreational Facilities - Edmonton Ave Centre - Professional Services - consultants     | 1,500              | 0                      |                    |
| Recreational Facilities - Edmonton Ave Centre - Professional Services - contractors     | 0                  | 0                      | 1,500              |
| Recreational Facilities - Edmonton Ave Centre - Property taxes - city sites             | 0                  | 0                      |                    |
| Recreational Facilities - Edmonton Ave Centre - Safety Equipment                        | 0                  | 0                      |                    |
| Recreational Facilities - Edmonton Ave Centre - Stationery and supplies                 | 0                  | 0                      | 1,500              |
| Recreational Facilities - Edmonton Ave Centre - Telephone and alarm maintenance         | 0                  | 0                      |                    |
| Recreational Facilities - Edmonton Ave Centre - Vandalism                               | 0                  | 0                      |                    |
| Recreational Facilities - Edmonton Ave Centre - Vehicle Allowances                      | 0                  | 0                      |                    |
| Recreational Facilities - Edmonton Ave Centre - Waste Removal                           | 0                  | 0                      |                    |
| Recreational Facilities - Edmonton Ave Centre - Interior Finishes                       | 0                  | 0                      |                    |
|                                                                                         | <b>17,700</b>      | <b>9,350</b>           | <b>17,700</b>      |

**2014 Budget**



# Gyro Bandshell

|                                                                                    | <b>2013 Budget</b> | <b>2013 Projection</b> | <b>2014 Budget</b> |
|------------------------------------------------------------------------------------|--------------------|------------------------|--------------------|
| Recreational Facilities - Gyro Bandshell - Electricity                             | 1,600              | 1,600                  | 1,600              |
| Recreational Facilities - Gyro Bandshell - Facility maint. and repair - electrical | 0                  | 0                      | 1,050              |
| Recreational Facilities - Gyro Bandshell - Facility maint. and repair - envelope   | 0                  | 0                      | 500                |
| Recreational Facilities - Gyro Bandshell - Facility maint. and repair - HVAC       | 0                  | 0                      | 1,050              |
| Recreational Facilities - Gyro Bandshell - Facility maint. and repair - other      | 4,200              | 1,700                  | 550                |
| Recreational Facilities - Gyro Bandshell - Facility maint. and repair - plumbing   | 0                  | 0                      | 1,050              |
| Recreational Facilities - Gyro Bandshell - General tool repair & replacement       | 2,500              | 2,500                  |                    |
| Recreational Facilities - Gyro Bandshell - Janitor                                 | 0                  | 0                      |                    |
| Recreational Facilities - Gyro Bandshell - Natural gas                             | 0                  | 0                      |                    |
| Recreational Facilities - Gyro Bandshell - Professional Services - consultants     | 1,000              | 1,000                  |                    |
| Recreational Facilities - Gyro Bandshell - Professional Services - contractors     | 0                  | 0                      | 1,000              |
| Recreational Facilities - Gyro Bandshell - Property taxes - city sites             | 0                  | 0                      |                    |
| Recreational Facilities - Gyro Bandshell - Safety Equipment                        | 0                  | 0                      |                    |
| Recreational Facilities - Gyro Bandshell - Stationery and supplies                 | 0                  | 0                      | 2,500              |
| Recreational Facilities - Gyro Bandshell - Telephone and alarm maintenance         | 0                  | 0                      |                    |
| Recreational Facilities - Gyro Bandshell - Vandalism                               | 0                  | 0                      |                    |
| Recreational Facilities - Gyro Bandshell - Vehicle Allowances                      | 0                  | 0                      |                    |
| Recreational Facilities - Gyro Bandshell - Waste Removal                           | 0                  | 0                      |                    |
| Recreational Facilities - Gyro Bandshell - Interior Finishes                       | 0                  | 0                      |                    |
|                                                                                    | <b>9,300</b>       | <b>6,800</b>           | <b>9,300</b>       |

**2014 Budget**



# Indoor Soccer Facility

|                                                                                            | 2013 Budget   | 2013 Projection | 2014 Budget   |
|--------------------------------------------------------------------------------------------|---------------|-----------------|---------------|
| Recreational Facilities - Indoor Soccer Facility - Electricity                             | 0             | 0               |               |
| Recreational Facilities - Indoor Soccer Facility - Facility maint. and repair - electrical | 0             | 0               |               |
| Recreational Facilities - Indoor Soccer Facility - Facility maint. and repair - envelope   | 0             | 0               |               |
| Recreational Facilities - Indoor Soccer Facility - Facility maint. and repair - HVAC       | 0             | 0               |               |
| Recreational Facilities - Indoor Soccer Facility - Facility maint. and repair - other      | 0             | 0               |               |
| Recreational Facilities - Indoor Soccer Facility - Facility maint. and repair - plumbing   | 0             | 0               |               |
| Recreational Facilities - Indoor Soccer Facility - General tool repair & replacement       | 0             | 0               |               |
| Recreational Facilities - Indoor Soccer Facility - Janitor                                 | 0             | 0               |               |
| Recreational Facilities - Indoor Soccer Facility - Natural gas                             | 0             | 0               |               |
| Recreational Facilities - Indoor Soccer Facility - Professional Services - consultants     | 0             | 0               |               |
| Recreational Facilities - Indoor Soccer Facility - Professional Services - contractors     | 0             | 0               |               |
| Recreational Facilities - Indoor Soccer Facility - Property taxes - city sites             | 10,000        | 10,000          | 10,000        |
| Recreational Facilities - Indoor Soccer Facility - Safety Equipment                        | 0             | 0               |               |
| Recreational Facilities - Indoor Soccer Facility - Stationery and supplies                 | 0             | 2,614           |               |
| Recreational Facilities - Indoor Soccer Facility - Telephone and alarm maintenance         | 0             | 0               |               |
| Recreational Facilities - Indoor Soccer Facility - Vandalism                               | 0             | 0               |               |
| Recreational Facilities - Indoor Soccer Facility - Vehicle Allowances                      | 0             | 0               |               |
| Recreational Facilities - Indoor Soccer Facility - Waste Removal                           | 0             | 0               |               |
| Recreational Facilities - Indoor Soccer Facility - Interior Finishes                       | 0             | 0               |               |
|                                                                                            | <b>10,000</b> | <b>12,614</b>   | <b>10,000</b> |

# Jubilee Pavilion

|                                                                                      | <b>2013 Budget</b> | <b>2013 Projection</b> | <b>2014 Budget</b> |
|--------------------------------------------------------------------------------------|--------------------|------------------------|--------------------|
| Recreational Facilities - Jubilee Pavilion - Electricity                             | 8,800              | 7,500                  | 8,800              |
| Recreational Facilities - Jubilee Pavilion - Facility maint. and repair - electrical | 0                  | 0                      | 350                |
| Recreational Facilities - Jubilee Pavilion - Facility maint. and repair - envelope   | 0                  | 0                      | 175                |
| Recreational Facilities - Jubilee Pavilion - Facility maint. and repair - HVAC       | 0                  | 0                      | 350                |
| Recreational Facilities - Jubilee Pavilion - Facility maint. and repair - other      | 1,400              | 0                      | 175                |
| Recreational Facilities - Jubilee Pavilion - Facility maint. and repair - plumbing   | 0                  | 0                      | 350                |
| Recreational Facilities - Jubilee Pavilion - General tool repair & replacement       | 0                  | 0                      |                    |
| Recreational Facilities - Jubilee Pavilion - Janitor                                 | 2,200              | 2,200                  | 2,200              |
| Recreational Facilities - Jubilee Pavilion - Natural gas                             | 0                  | 154                    |                    |
| Recreational Facilities - Jubilee Pavilion - Professional Services - consultants     | 0                  | 1,048                  |                    |
| Recreational Facilities - Jubilee Pavilion - Professional Services - contractors     | 200                | 0                      | 200                |
| Recreational Facilities - Jubilee Pavilion - Property taxes - city sites             | 0                  | 0                      |                    |
| Recreational Facilities - Jubilee Pavilion - Safety Equipment                        | 0                  | 0                      |                    |
| Recreational Facilities - Jubilee Pavilion - Stationery and supplies                 | 600                | 0                      | 600                |
| Recreational Facilities - Jubilee Pavilion - Telephone and alarm maintenance         | 0                  | 0                      |                    |
| Recreational Facilities - Jubilee Pavilion - Vandalism                               | 0                  | 0                      |                    |
| Recreational Facilities - Jubilee Pavilion - Vehicle Allowances                      | 0                  | 0                      |                    |
| Recreational Facilities - Jubilee Pavilion - Waste Removal                           | 0                  | 0                      |                    |
| Recreational Facilities - Jubilee Pavilion - Interior Finishes                       | 0                  | 0                      |                    |
|                                                                                      | <b>13,200</b>      | <b>10,902</b>          | <b>13,200</b>      |

# Library / Museum Complex

|                                                                                            | <b>2013 Budget</b> | <b>2013 Projection</b> | <b>2014 Budget</b> |
|--------------------------------------------------------------------------------------------|--------------------|------------------------|--------------------|
| Recreational Facilities - Library/Museum Complex - Electricity                             | 50,000             | 45,000                 | 45,000             |
| Recreational Facilities - Library/Museum Complex - Facility maint. and repair - electrical | 0                  | 2,000                  | 9,750              |
| Recreational Facilities - Library/Museum Complex - Facility maint. and repair - envelope   | 0                  | 3,500                  | 4,750              |
| Recreational Facilities - Library/Museum Complex - Facility maint. and repair - HVAC       | 0                  | 2,400                  | 9,750              |
| Recreational Facilities - Library/Museum Complex - Facility maint. and repair - other      | 39,000             | 29,523                 | 5,000              |
| Recreational Facilities - Library/Museum Complex - Facility maint. and repair - plumbing   | 0                  | 500                    | 9,750              |
| Recreational Facilities - Library/Museum Complex - General tool repair & replacement       | 10,000             | 5,000                  |                    |
| Recreational Facilities - Library/Museum Complex - Janitor                                 | 40,000             | 34,000                 | 34,000             |
| Recreational Facilities - Library/Museum Complex - Natural gas                             | 0                  |                        |                    |
| Recreational Facilities - Library/Museum Complex - Professional Services - consultants     | 55,000             | 50,000                 |                    |
| Recreational Facilities - Library/Museum Complex - Professional Services - contractors     | 0                  | 0                      | 50,000             |
| Recreational Facilities - Library/Museum Complex - Property taxes - city sites             | 0                  | 0                      |                    |
| Recreational Facilities - Library/Museum Complex - Safety Equipment                        | 0                  | 0                      |                    |
| Recreational Facilities - Library/Museum Complex - Stationery and supplies                 | 0                  | 0                      | 10,000             |
| Recreational Facilities - Library/Museum Complex - Telephone and alarm maintenance         | 0                  | 0                      |                    |
| Recreational Facilities - Library/Museum Complex - Vandalism                               | 0                  | 0                      |                    |
| Recreational Facilities - Library/Museum Complex - Vehicle Allowances                      | 0                  | 0                      |                    |
| Recreational Facilities - Library/Museum Complex - Waste Removal                           | 0                  | 0                      |                    |
| Recreational Facilities - Library/Museum Complex - Interior Finishes                       | 0                  | 0                      |                    |
|                                                                                            | <b>194,000</b>     | <b>171,923</b>         | <b>178,000</b>     |

**2014 Budget**



# Okanagan Marina

|                                                                                       | 2013 Budget  | 2013 Projection | 2014 Budget  |
|---------------------------------------------------------------------------------------|--------------|-----------------|--------------|
| Recreational Facilities - Marina - Okanagan - Electricity                             | 0            | 0               |              |
| Recreational Facilities - Marina - Okanagan - Facility maint. and repair - electrical | 0            | 0               |              |
| Recreational Facilities - Marina - Okanagan - Facility maint. and repair - envelope   | 0            | 0               |              |
| Recreational Facilities - Marina - Okanagan - Facility maint. and repair - HVAC       | 0            | 0               |              |
| Recreational Facilities - Marina - Okanagan - Facility maint. and repair - other      | 500          | 0               | 500          |
| Recreational Facilities - Marina - Okanagan - Facility maint. and repair - plumbing   | 0            | 0               |              |
| Recreational Facilities - Marina - Okanagan - General tool repair & replacement       | 500          | 500             |              |
| Recreational Facilities - Marina - Okanagan - Janitor                                 | 0            | 0               |              |
| Recreational Facilities - Marina - Okanagan - Natural gas                             | 0            | 0               |              |
| Recreational Facilities - Marina - Okanagan - Professional Services - consultants     | 0            | 0               |              |
| Recreational Facilities - Marina - Okanagan - Professional Services - contractors     | 0            | 0               |              |
| Recreational Facilities - Marina - Okanagan - Property taxes - city sites             | 0            | 0               |              |
| Recreational Facilities - Marina - Okanagan - Safety Equipment                        | 0            | 0               |              |
| Recreational Facilities - Marina - Okanagan - Stationery and supplies                 | 0            | 0               | 500          |
| Recreational Facilities - Marina - Okanagan - Telephone and alarm maintenance         | 0            | 0               |              |
| Recreational Facilities - Marina - Okanagan - Vandalism                               | 0            | 0               |              |
| Recreational Facilities - Marina - Okanagan - Vehicle Allowances                      | 0            | 0               |              |
| Recreational Facilities - Marina - Okanagan - Waste Removal                           | 0            | 0               |              |
| Recreational Facilities - Marina - Okanagan - Interior Finishes                       | 0            | 0               |              |
|                                                                                       | <b>1,000</b> | <b>500</b>      | <b>1,000</b> |

# Skaha Marina

|                                                                                    | 2013 Budget  | 2013 Projection | 2014 Budget  |
|------------------------------------------------------------------------------------|--------------|-----------------|--------------|
| Recreational Facilities - Marina - Skaha - Electricity                             | 0            | 0               |              |
| Recreational Facilities - Marina - Skaha - Facility maint. and repair - electrical | 0            | 0               |              |
| Recreational Facilities - Marina - Skaha - Facility maint. and repair - envelope   | 0            | 0               |              |
| Recreational Facilities - Marina - Skaha - Facility maint. and repair - HVAC       | 0            | 0               |              |
| Recreational Facilities - Marina - Skaha - Facility maint. and repair - other      | 1,500        | 1,700           | 1,500        |
| Recreational Facilities - Marina - Skaha - Facility maint. and repair - plumbing   | 0            | 0               |              |
| Recreational Facilities - Marina - Skaha - General tool repair & replacement       | 1,200        | 0               |              |
| Recreational Facilities - Marina - Skaha - Janitor                                 | 0            | 0               |              |
| Recreational Facilities - Marina - Skaha - Natural gas                             | 0            | 0               |              |
| Recreational Facilities - Marina - Skaha - Professional Services - consultants     | 1,200        | 1,200           |              |
| Recreational Facilities - Marina - Skaha - Professional Services - contractors     | 0            | 0               | 1,200        |
| Recreational Facilities - Marina - Skaha - Property taxes - city sites             | 4,500        | 4,500           | 4,500        |
| Recreational Facilities - Marina - Skaha - Safety Equipment                        | 0            | 0               |              |
| Recreational Facilities - Marina - Skaha - Stationery and supplies                 | 0            | 0               | 1,200        |
| Recreational Facilities - Marina - Skaha - Telephone and alarm maintenance         | 0            | 0               |              |
| Recreational Facilities - Marina - Skaha - Vandalism                               | 0            | 0               |              |
| Recreational Facilities - Marina - Skaha - Vehicle Allowances                      | 0            | 0               |              |
| Recreational Facilities - Marina - Skaha - Waste Removal                           | 0            | 0               |              |
| Recreational Facilities - Marina - Skaha - Interior Finishes                       | 0            | 0               |              |
|                                                                                    | <b>8,400</b> | <b>7,400</b>    | <b>8,400</b> |

# McLaren Arena

|                                                                                   | <b>2013 Budget</b> | <b>2013 Projection</b> | <b>2014 Budget</b> |
|-----------------------------------------------------------------------------------|--------------------|------------------------|--------------------|
| Recreational Facilities - McLaren Arena - Electricity                             | 65,000             | 45,000                 | 45,000             |
| Recreational Facilities - McLaren Arena - Facility maint. and repair - electrical | 0                  | 0                      | 8,500              |
| Recreational Facilities - McLaren Arena - Facility maint. and repair - envelope   | 0                  | 0                      | 8,500              |
| Recreational Facilities - McLaren Arena - Facility maint. and repair - HVAC       | 0                  | 0                      | 8,500              |
| Recreational Facilities - McLaren Arena - Facility maint. and repair - other      | 260,800            | 260,800                | 200,000            |
| Recreational Facilities - McLaren Arena - Facility maint. and repair - plumbing   | 0                  | 0                      | 8,500              |
| Recreational Facilities - McLaren Arena - General tool repair & replacement       | 0                  |                        | 0                  |
| Recreational Facilities - McLaren Arena - Janitor                                 | 2,500              | 4,500                  | 29,300             |
| Recreational Facilities - McLaren Arena - Natural gas                             | 0                  | 313                    |                    |
| Recreational Facilities - McLaren Arena - Professional Services - consultants     | 11,000             | 12,000                 |                    |
| Recreational Facilities - McLaren Arena - Professional Services - contractors     | 0                  | 3,682                  | 11,000             |
| Recreational Facilities - McLaren Arena - Property taxes - city sites             | 43,824             | 43,824                 | 43,824             |
| Recreational Facilities - McLaren Arena - Safety Equipment                        | 0                  | 0                      | 2,000              |
| Recreational Facilities - McLaren Arena - Stationery and supplies                 | 27,000             | 19,881                 | 25,000             |
| Recreational Facilities - McLaren Arena - Telephone and alarm maintenance         | 0                  | 0                      |                    |
| Recreational Facilities - McLaren Arena - Vandalism                               | 0                  | 0                      |                    |
| Recreational Facilities - McLaren Arena - Vehicle Allowances                      | 0                  | 0                      |                    |
| Recreational Facilities - McLaren Arena - Waste Removal                           | 0                  | 0                      |                    |
| Recreational Facilities - McLaren Arena - Interior Finishes                       | 0                  | 0                      |                    |
|                                                                                   | <b>410,124</b>     | <b>390,000</b>         | <b>390,124</b>     |



# Mobile Washrooms

|                                                                                                | 2013 Budget   | 2013 Projection | 2014 Budget   |
|------------------------------------------------------------------------------------------------|---------------|-----------------|---------------|
| Recreational Facilities - Mobile Concession/Washroom - Electricity                             | 0             | 0               |               |
| Recreational Facilities - Mobile Concession/Washroom - Facility maint. and repair - electrical | 0             | 0               | 2,125         |
| Recreational Facilities - Mobile Concession/Washroom - Facility maint. and repair - envelope   | 0             | 0               | 1,125         |
| Recreational Facilities - Mobile Concession/Washroom - Facility maint. and repair - HVAC       | 0             | 0               | 2,125         |
| Recreational Facilities - Mobile Concession/Washroom - Facility maint. and repair - other      | 8,500         | 6,650           | 1,000         |
| Recreational Facilities - Mobile Concession/Washroom - Facility maint. and repair - plumbing   | 0             | 0               | 2,125         |
| Recreational Facilities - Mobile Concession/Washroom - General tool repair & replacement       | 0             |                 |               |
| Recreational Facilities - Mobile Concession/Washroom - Janitor                                 | 0             | 0               |               |
| Recreational Facilities - Mobile Concession/Washroom - Natural gas                             | 0             | 0               |               |
| Recreational Facilities - Mobile Concession/Washroom - Professional Services - consultants     | 1,200         | 1,200           |               |
| Recreational Facilities - Mobile Concession/Washroom - Professional Services - contractors     | 0             | 0               | 1,200         |
| Recreational Facilities - Mobile Concession/Washroom - Property taxes - city sites             | 0             | 0               |               |
| Recreational Facilities - Mobile Concession/Washroom - Safety Equipment                        | 0             | 0               |               |
| Recreational Facilities - Mobile Concession/Washroom - Stationery and supplies                 | 1,500         | 0               | 1,500         |
| Recreational Facilities - Mobile Concession/Washroom - Telephone and alarm maintenance         | 0             | 0               |               |
| Recreational Facilities - Mobile Concession/Washroom - Vandalism                               | 0             | 0               |               |
| Recreational Facilities - Mobile Concession/Washroom - Vehicle Allowances                      | 0             | 0               |               |
| Recreational Facilities - Mobile Concession/Washroom - Waste Removal                           | 0             | 0               |               |
| Recreational Facilities - Mobile Concession/Washroom - Interior Finishes                       | 0             | 0               |               |
|                                                                                                | <b>11,200</b> | <b>7,850</b>    | <b>11,200</b> |

# Former Yacht & Tennis Club

|                                                                                  | <b>2013 Budget</b> | <b>2013 Projection</b> | <b>2014 Budget</b> |
|----------------------------------------------------------------------------------|--------------------|------------------------|--------------------|
| Recreational Facilities - Nanaimo Hall - Electricity                             | 0                  | 0                      |                    |
| Recreational Facilities - Nanaimo Hall - Facility maint. and repair - electrical | 0                  | 0                      | 1,250              |
| Recreational Facilities - Nanaimo Hall - Facility maint. and repair - envelope   | 0                  | 0                      | 625                |
| Recreational Facilities - Nanaimo Hall - Facility maint. and repair - HVAC       | 0                  | 0                      | 1,250              |
| Recreational Facilities - Nanaimo Hall - Facility maint. and repair - other      | 5,000              | 1,500                  | 625                |
| Recreational Facilities - Nanaimo Hall - Facility maint. and repair - plumbing   | 0                  | 0                      | 1,250              |
| Recreational Facilities - Nanaimo Hall - General tool repair & replacement       | 0                  |                        |                    |
| Recreational Facilities - Nanaimo Hall - Janitor                                 | 2,500              | 1,200                  | 1,250              |
| Recreational Facilities - Nanaimo Hall - Natural gas                             | 0                  | 0                      |                    |
| Recreational Facilities - Nanaimo Hall - Professional Services - consultants     | 1,500              | 0                      |                    |
| Recreational Facilities - Nanaimo Hall - Professional Services - contractors     | 0                  | 0                      | 1,500              |
| Recreational Facilities - Nanaimo Hall - Property taxes - city sites             | 0                  | 0                      |                    |
| Recreational Facilities - Nanaimo Hall - Safety Equipment                        | 0                  | 0                      |                    |
| Recreational Facilities - Nanaimo Hall - Stationery and supplies                 | 1,500              | 0                      | 1,500              |
| Recreational Facilities - Nanaimo Hall - Telephone and alarm maintenance         | 0                  | 0                      |                    |
| Recreational Facilities - Nanaimo Hall - Vandalism                               | 0                  | 0                      |                    |
| Recreational Facilities - Nanaimo Hall - Vehicle Allowances                      | 0                  | 0                      |                    |
| Recreational Facilities - Nanaimo Hall - Waste Removal                           | 0                  | 0                      |                    |
| Recreational Facilities - Nanaimo Hall - Interior Finishes                       | 0                  | 0                      |                    |
|                                                                                  | <b>10,500</b>      | <b>2,700</b>           | <b>9,250</b>       |

# Wine / Visitor Information Centre

|                                                                                                  | 2013 Budget   | 2013 Projection | 2014 Budget   |
|--------------------------------------------------------------------------------------------------|---------------|-----------------|---------------|
| Recreational Facilities - New Wine/visitor Info Centre - Electricity                             | 0             | 7,323           | 0             |
| Recreational Facilities - New Wine/visitor Info Centre - Facility maint. and repair - electrical | 0             | 500             | 1,500         |
| Recreational Facilities - New Wine/visitor Info Centre - Facility maint. and repair - envelope   | 0             | 0               | 300           |
| Recreational Facilities - New Wine/visitor Info Centre - Facility maint. and repair - HVAC       | 0             | 1,000           | 1,500         |
| Recreational Facilities - New Wine/visitor Info Centre - Facility maint. and repair - other      | 2,400         | 900             | 1,000         |
| Recreational Facilities - New Wine/visitor Info Centre - Facility maint. and repair - plumbing   | 0             | 200             | 600           |
| Recreational Facilities - New Wine/visitor Info Centre - General tool repair & replacement       | 0             | 769             |               |
| Recreational Facilities - New Wine/visitor Info Centre - Janitor                                 | 17,000        | 17,000          | 17,000        |
| Recreational Facilities - New Wine/visitor Info Centre - Natural gas                             | 0             | 0               |               |
| Recreational Facilities - New Wine/visitor Info Centre - Professional Services - consultants     | 0             | 0               |               |
| Recreational Facilities - New Wine/visitor Info Centre - Professional Services - contractors     | 8,900         | 8,000           | 8,000         |
| Recreational Facilities - New Wine/visitor Info Centre - Property taxes - city sites             | 0             | 0               |               |
| Recreational Facilities - New Wine/visitor Info Centre - Safety Equipment                        | 0             | 0               |               |
| Recreational Facilities - New Wine/visitor Info Centre - Stationery and supplies                 | 1,200         | 0               | 1,200         |
| Recreational Facilities - New Wine/visitor Info Centre - Telephone and alarm maintenance         | 0             | 0               |               |
| Recreational Facilities - New Wine/visitor Info Centre - Vandalism                               | 0             | 0               |               |
| Recreational Facilities - New Wine/visitor Info Centre - Vehicle Allowances                      | 0             | 0               |               |
| Recreational Facilities - New Wine/visitor Info Centre - Waste Removal                           | 0             | 0               |               |
| Recreational Facilities - New Wine/visitor Info Centre - Interior Finishes                       | 0             | 0               |               |
|                                                                                                  | <b>29,500</b> | <b>35,691</b>   | <b>31,100</b> |

# S.S. Sicamous

|                                                                                        | <b>2013 Budget</b> | <b>2013 Projection</b> | <b>2014 Budget</b> |
|----------------------------------------------------------------------------------------|--------------------|------------------------|--------------------|
| Recreational Facilities - Sicamous Boathouse - Electricity                             | 0                  | 0                      |                    |
| Recreational Facilities - Sicamous Boathouse - Facility maint. and repair - electrical | 0                  | 0                      | 100                |
| Recreational Facilities - Sicamous Boathouse - Facility maint. and repair - envelope   | 0                  | 0                      |                    |
| Recreational Facilities - Sicamous Boathouse - Facility maint. and repair - HVAC       | 0                  | 0                      | 100                |
| Recreational Facilities - Sicamous Boathouse - Facility maint. and repair - other      | 400                | 0                      | 100                |
| Recreational Facilities - Sicamous Boathouse - Facility maint. and repair - plumbing   | 0                  | 0                      | 100                |
| Recreational Facilities - Sicamous Boathouse - General tool repair & replacement       | 0                  | 0                      |                    |
| Recreational Facilities - Sicamous Boathouse - Janitor                                 | 0                  | 0                      |                    |
| Recreational Facilities - Sicamous Boathouse - Natural gas                             | 0                  | 0                      |                    |
| Recreational Facilities - Sicamous Boathouse - Professional Services - consultants     | 0                  | 1,000                  |                    |
| Recreational Facilities - Sicamous Boathouse - Professional Services - contractors     | 1,700              | 900                    | 1,200              |
| Recreational Facilities - Sicamous Boathouse - Property taxes - city sites             | 0                  | 0                      |                    |
| Recreational Facilities - Sicamous Boathouse - Safety Equipment                        | 0                  | 0                      |                    |
| Recreational Facilities - Sicamous Boathouse - Stationery and supplies                 | 0                  | 0                      |                    |
| Recreational Facilities - Sicamous Boathouse - Telephone and alarm maintenance         | 0                  | 0                      |                    |
| Recreational Facilities - Sicamous Boathouse - Vandalism                               | 0                  | 0                      |                    |
| Recreational Facilities - Sicamous Boathouse - Vehicle Allowances                      | 0                  | 0                      |                    |
| Recreational Facilities - Sicamous Boathouse - Waste Removal                           | 0                  | 0                      |                    |
| Recreational Facilities - Sicamous Boathouse - Interior Finishes                       | 0                  | 0                      |                    |
|                                                                                        | <b>2,100</b>       | <b>1,900</b>           | <b>1,600</b>       |

# Storage Facilities

|                                                                                                         | 2013 Budget | 2013 Projection | 2014 Budget  |
|---------------------------------------------------------------------------------------------------------|-------------|-----------------|--------------|
| Recreational Facilities - Storage Facilities - Administrative - Electricity                             | 0           | 0               |              |
| Recreational Facilities - Storage Facilities - Administrative - Facility maint. and repair - electrical | 0           | 0               |              |
| Recreational Facilities - Storage Facilities - Administrative - Facility maint. and repair - envelope   | 0           | 0               |              |
| Recreational Facilities - Storage Facilities - Administrative - Facility maint. and repair - HVAC       | 0           | 0               |              |
| Recreational Facilities - Storage Facilities - Administrative - Facility maint. and repair - other      | 0           | 1,600           | 1,600        |
| Recreational Facilities - Storage Facilities - Administrative - Facility maint. and repair - plumbing   | 0           | 0               |              |
| Recreational Facilities - Storage Facilities - Administrative - General tool repair & replacement       | 0           | 0               |              |
| Recreational Facilities - Storage Facilities - Administrative - Janitor                                 | 0           | 0               |              |
| Recreational Facilities - Storage Facilities - Administrative - Natural gas                             | 0           | 0               |              |
| Recreational Facilities - Storage Facilities - Administrative - Professional Services - consultants     | 0           | 0               |              |
| Recreational Facilities - Storage Facilities - Administrative - Professional Services - contractors     | 0           | 0               |              |
| Recreational Facilities - Storage Facilities - Administrative - Property taxes - city sites             | 0           | 0               |              |
| Recreational Facilities - Storage Facilities - Administrative - Safety Equipment                        | 0           | 0               |              |
| Recreational Facilities - Storage Facilities - Administrative - Stationery and supplies                 | 0           | 0               |              |
| Recreational Facilities - Storage Facilities - Administrative - Telephone and alarm maintenance         | 0           | 0               |              |
| Recreational Facilities - Storage Facilities - Administrative - Vandalism                               | 0           | 0               |              |
| Recreational Facilities - Storage Facilities - Administrative - Vehicle Allowances                      | 0           | 0               |              |
| Recreational Facilities - Storage Facilities - Administrative - Waste Removal                           | 0           | 0               |              |
| Recreational Facilities - Storage Facilities - Administrative - Interior Finishes                       | 0           | 0               |              |
|                                                                                                         | <b>0</b>    | <b>1,600</b>    | <b>1,600</b> |

# Walking Pier

|                                                                                  | <b>2013 Budget</b> | <b>2013 Projection</b> | <b>2014 Budget</b> |
|----------------------------------------------------------------------------------|--------------------|------------------------|--------------------|
| Recreational Facilities - Walking Pier - Electricity                             | 0                  | 0                      |                    |
| Recreational Facilities - Walking Pier - Facility maint. and repair - electrical | 0                  | 250                    | 2,500              |
| Recreational Facilities - Walking Pier - Facility maint. and repair - envelope   | 0                  | 550                    | 2,500              |
| Recreational Facilities - Walking Pier - Facility maint. and repair - HVAC       | 0                  | 0                      |                    |
| Recreational Facilities - Walking Pier - Facility maint. and repair - other      | 10,000             | 9,700                  | 5,000              |
| Recreational Facilities - Walking Pier - Facility maint. and repair - plumbing   | 0                  | 0                      |                    |
| Recreational Facilities - Walking Pier - General tool repair & replacement       | 0                  | 0                      |                    |
| Recreational Facilities - Walking Pier - Janitor                                 | 0                  | 0                      |                    |
| Recreational Facilities - Walking Pier - Natural gas                             | 0                  | 0                      |                    |
| Recreational Facilities - Walking Pier - Professional Services - consultants     | 0                  | 0                      |                    |
| Recreational Facilities - Walking Pier - Professional Services - contractors     | 0                  | 0                      |                    |
| Recreational Facilities - Walking Pier - Property taxes - city sites             | 0                  | 0                      |                    |
| Recreational Facilities - Walking Pier - Safety Equipment                        | 0                  | 0                      |                    |
| Recreational Facilities - Walking Pier - Stationery and supplies                 | 2,500              | 2,000                  | 2,500              |
| Recreational Facilities - Walking Pier - Telephone and alarm maintenance         | 0                  | 0                      |                    |
| Recreational Facilities - Walking Pier - Vandalism                               | 0                  | 0                      |                    |
| Recreational Facilities - Walking Pier - Vehicle Allowances                      | 0                  | 0                      |                    |
| Recreational Facilities - Walking Pier - Waste Removal                           | 0                  | 0                      |                    |
|                                                                                  | <b>12,500</b>      | <b>12,500</b>          | <b>12,500</b>      |

# Westminster Centre

|                                                                                        | <b>2013 Budget</b> | <b>2013 Projection</b> | <b>2014 Budget</b> |
|----------------------------------------------------------------------------------------|--------------------|------------------------|--------------------|
| Recreational Facilities - Westminster Centre - Electricity                             | 1,000              | 1,722                  | 0                  |
| Recreational Facilities - Westminster Centre - Facility maint. and repair - electrical | 0                  | 1,000                  | 1,500              |
| Recreational Facilities - Westminster Centre - Facility maint. and repair - envelope   | 0                  | 0                      | 500                |
| Recreational Facilities - Westminster Centre - Facility maint. and repair - HVAC       | 0                  | 0                      | 1,500              |
| Recreational Facilities - Westminster Centre - Facility maint. and repair - other      | 6,000              | 1,000                  | 1,000              |
| Recreational Facilities - Westminster Centre - Facility maint. and repair - plumbing   | 0                  | 0                      | 1,500              |
| Recreational Facilities - Westminster Centre - General tool repair & replacement       | 0                  | 0                      | 0                  |
| Recreational Facilities - Westminster Centre - Janitor                                 | 0                  | 0                      |                    |
| Recreational Facilities - Westminster Centre - Natural gas                             | 0                  | 55                     |                    |
| Recreational Facilities - Westminster Centre - Professional Services - consultants     | 0                  | 523                    |                    |
| Recreational Facilities - Westminster Centre - Professional Services - contractors     | 2,000              | 1,200                  | 2,000              |
| Recreational Facilities - Westminster Centre - Property taxes - city sites             | 0                  | 0                      |                    |
| Recreational Facilities - Westminster Centre - Safety Equipment                        | 0                  | 0                      |                    |
| Recreational Facilities - Westminster Centre - Stationery and supplies                 | 2,000              | 0                      | 2,000              |
| Recreational Facilities - Westminster Centre - Telephone and alarm maintenance         | 0                  | 0                      |                    |
| Recreational Facilities - Westminster Centre - Vandalism                               | 0                  | 0                      |                    |
| Recreational Facilities - Westminster Centre - Vehicle Allowances                      | 0                  | 0                      |                    |
| Recreational Facilities - Westminster Centre - Waste Removal                           | 0                  | 0                      |                    |
| Recreational Facilities - Westminster Centre - Interior Finishes                       | 0                  | 0                      |                    |
|                                                                                        | <b>11,000</b>      | <b>5,500</b>           | <b>10,000</b>      |



**Questions?**

