

Yard Waste **SORT & GO!**



Way to

GO! PENTICTON
RECYCLES



YES! Put in your Yard Waste Cart

- Plants & trimmings
- Grass clippings
- Weeds, leaves, pine cones, branches

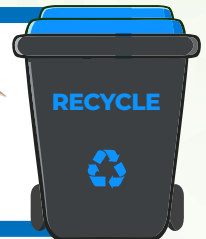


YOU GOT THIS

- Yard waste cart is collected bi-weekly throughout Penticton between March and December
- Place loosely in the green cart (no paper or plastic bags)
- Put your cart out by **7 a.m. biweekly** on your collection day

PLACE IN RECYCLING CART

- Plastic flower pots & trays
- Cardboard boxes



WAY TO GO! DEPOT

- Plastic bags & overwrap
- Soil bags
- Electronics
- Batteries
- Paint cans
- Lumber



Keep these items **OUT** of your Yard Waste Cart

Drop off at a
Recycling Depot:



J&C Bottle Depot
200 Rosetown Avenue

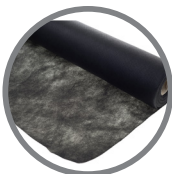


Campbell Mountain Landfill
1765 Reservoir Road



PLACE IN WASTE CART

- Kitchen / food scraps
- Pet waste
- Biodegradable bags / plastics
- Garden hose
- Landscape fabric
- Broken garden tools



QUESTIONS?

Don't see your item here?

Use our Waste Wizard tool at
penticton.ca/yardwaste
to find out how to dispose of it.

RECYCLE HOTLINE:
1-800-667-4321

