



Cerebrum Digitalis 5

Maggie Wouterloot
Nanaimo, B.C.

Maggie concentrated on printmaking and photography during her undergraduate years at Concordia University in Montreal. After completing a Bachelor of Fine Arts she worked in the publishing sector as a researcher and photographer. Her photographic works have been featured in books, calendars and magazines. Upon moving to Nanaimo, she began experimenting with papier mache and cast paper sculpture often incorporating mosaics onto those surfaces. Since 2011, she has applied her mold-making skills to working in plaster, concrete and resin. Her work was selected as part of the 2016 and 2018 Temporary Public Art Tour for the city of Nanaimo. Her paintings and sculptural works are part of public and private collections in Canada and Europe.



Description: Cerebrum Digitalis is a metaphor for the influence of technology on the brain. Just as 15th century explorers charted courses into unknown territory we are also just beginning to realize how much we have yet to explore and discover about the brain and the positive and negative effects of hyper connectivity upon it. Its park setting is an ideal location to remind ourselves that technology is now a constant in our lives therefore we must use it carefully and in moderation. Behind, the two are set to go out in their finest attire.



Penticton Public Sculpture Exhibit

Information & Map

May 2019 - April 2020



FireHouse 6

Nathan Pierce
Missouri, U.S.A.

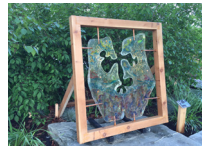
Nathan was brought up in the mid-west where his father, a third-generation stone mason, taught him the value of craftsmanship. From this experience grew an appreciation for the working man, as well as a passion for building things with his hands. His sculptures reflect not only his personal interest in architectural forms, but also a belief that communication plays a fundamental role in our perceptions of the world we live in.

Description: Large free standing contemporary sculpture fabricated from structural steel. Developed around the idea of communication, this public art sculpture will inspire viewers to use their imagination and challenge their perspectives on the importance of communication.



FireHouse

The City of Penticton encourages everyone to visit and enjoy each of the sculptures along the Okanagan Lake waterfront, at City Hall and the Front Street roundabout.





In Love with the Wind

Serge Mozhnevsky **1**
Coquitlam, B.C.

Raised in Ukraine, Serge graduated the Uzhgorod Professional College with a Diploma with Honours in Wood Carving. During the 80s and in to the 90s, he participated in numerous Ukrainian and International exhibitions. In 2000 Serge immigrated to Canada. He lives in Vancouver.

Description: The sculpture represents openness to life.



Restoration & Resilience

Lars Baggenstos **2**
Peachland, B.C.

Lars Baggenstos was born on the Coastline of the North Sea in Germany. After he finished highschool, he enrolled into the Woodcarving School of Brienz where he spent four years in the heart of the Bernese Alps learning the tricks of the wood carving trade. After five years of working in sculpting in mediums from wood to stainless steel, the urge to broaden his skills led him to the Zürich School of Arts. He graduated with a Bachelor of Arts ZFH in Visual Communication with a specialization in Scientific Visualization. Since then, he has worked as a freelance illustrator for clients including the Basel Natural History Museum and Tourism Uri, and as a sculptor for theater and movie sets. His love for the great outdoors brought him to Peachland BC, Canada, where he currently lives with his wife and dog.



Description: Square rough-hewn wooden beams merge into an intricately carved Bighorn rams head. The pieces of wood that are not carved to a ram's head stand for the work in progress and effort of humans to save this species. Steps to a positive and environmentally friendly future. The bighorn sheep is an icon of the Okanagan and a conservation success story. This sculpture represents the resilience and vulnerability of nature, and our capacity to care about the creatures we share our environment with.



Resurface

Conrad Sarzynick **4**
Powell River, B.C.

Conrad Sarzynick is a self-taught artist whose prominent medium is sculpture in wood. He grew up in southern Ontario where he began sculpting in the mid-1990s. Since 1999 he has lived permanently in British Columbia, first in Vancouver then moving to Powell River in 2010 where he lives today. He has exhibited in galleries and group shows throughout British Columbia since 2001. Conrad is also a poet and collage artist who enjoys exploring experimental vocal work with improvisational musicians.

Description: A starting point for the imagination. Strangely familiar organic forms with dynamic shapes and movements reminiscent of natural forces and living things that welcome multiple interpretations.



Tell us your favourite sculpture and enter your name into a draw for a gift basket on August 31, 2019.

Drop off this ent y form in the mail slot of City Hall to enter.

- In Love with the Wind
- Resurface
- Ram's Head
- Cerebrum Digitalis
- Bolt
- FireHouse

Why is it your favourite? _____

Name: _____

Phone Number: _____



Bolt

Benjamin C. Mefford **3**
Oregon, U.S.A.

Benjamin C. Mefford is an emerging artist based in Oregon, USA. He is formally educated in studio art and research writing. As a production assistant, he expanded his education by working for professional artists on video, stone, textile, and public art projects. He completed his first public art commission "The Ocean and the Moon" for the City of Lake Oswego, Oregon in 2017, a four element site specific sculpture composed of 8000lbs of carved basalt. Current material interests revolve around fluid dynamic, and how these are captured in solid materials. Dreaming, visualization, and experimentation are essential to his process.

Description: Columnar basalt is a hard stone local to the Pacific Northwest region of North America. It comes in many shapes and sizes, but geological forces tend to form the material in tall columns that are often hexagonal. Honed to a matte finish, the deep grey of the interior stone appears very steel-like, and the raw natural surface appears almost as rusted or weathered steel. "Bolt" utilizes these natural qualities of the stone as it is transformed into a magnified version of a hex-head bolt. This sculpture reflects on the foundation of human culture in the Stone Age as it relates to the modern built environment.

